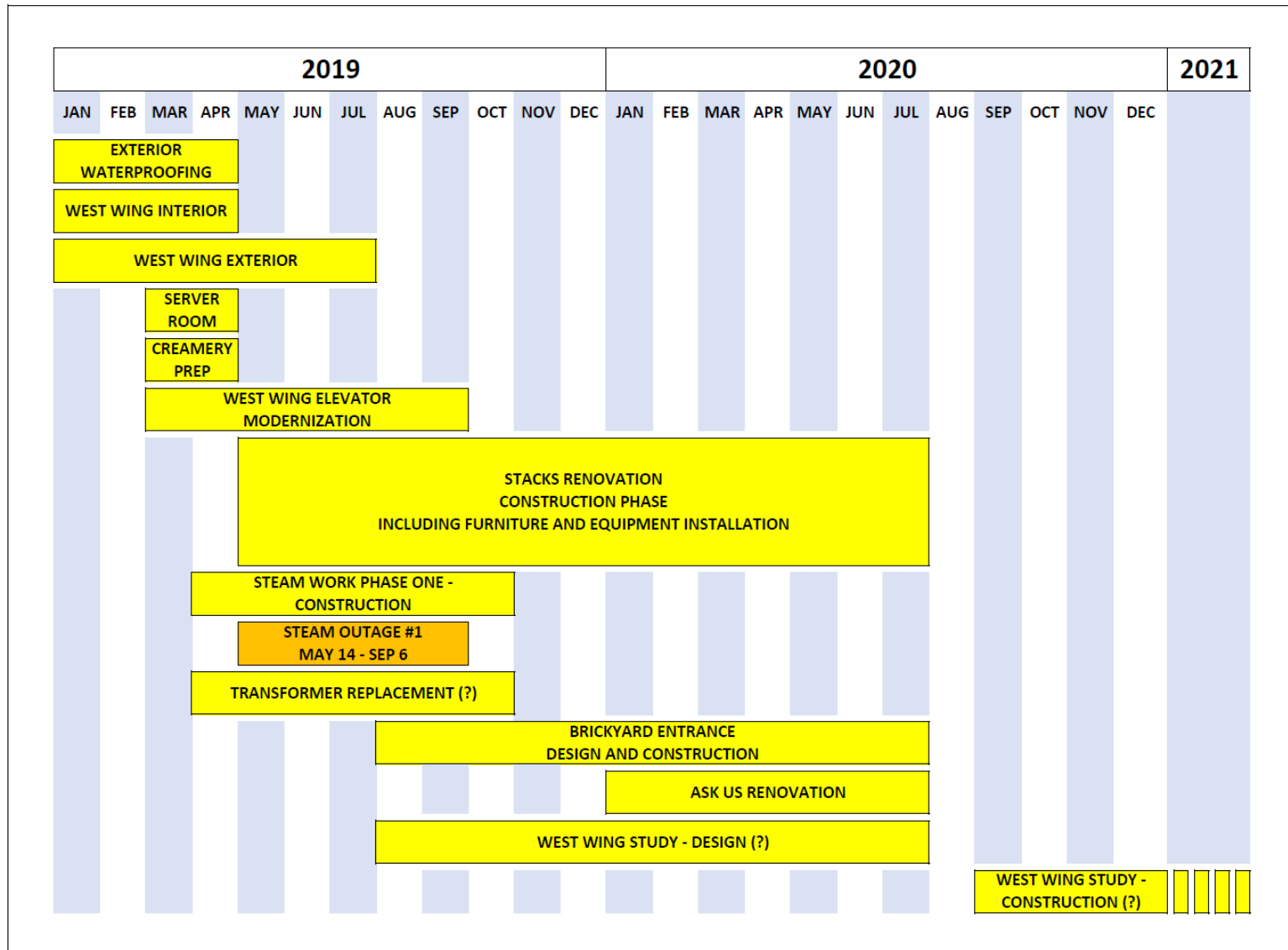


# Update on West Wing Renovation at Hill Library

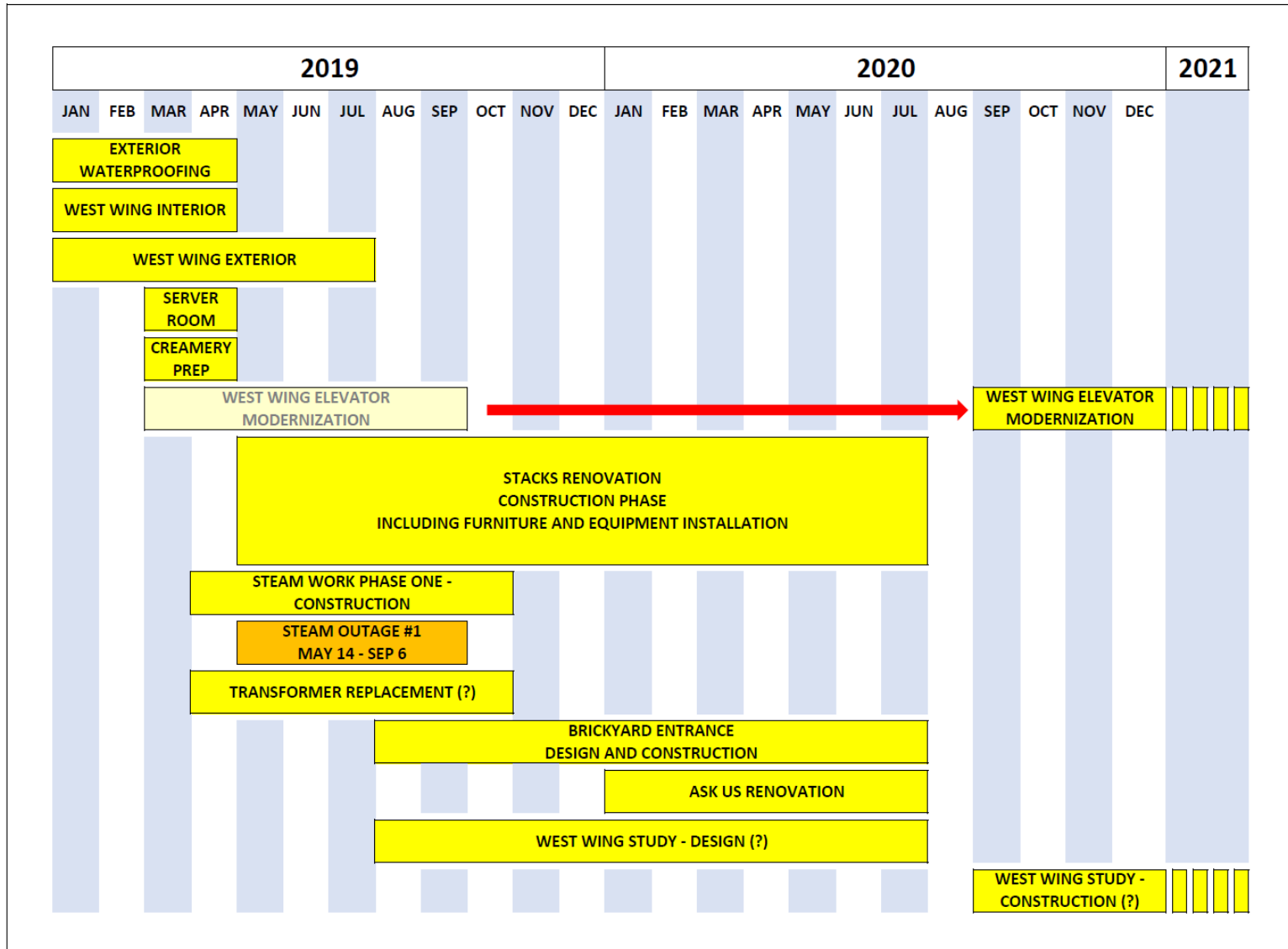


University Library Committee ♦ February 1, 2019

# HILL LIBRARY RENOVATION PROJECTS TIMELINE



# HILL LIBRARY RENOVATION PROJECTS TIMELINE



# WEST WING RENOVATION PROJECT

## HILLSBOROUGH STREET ENTRANCE

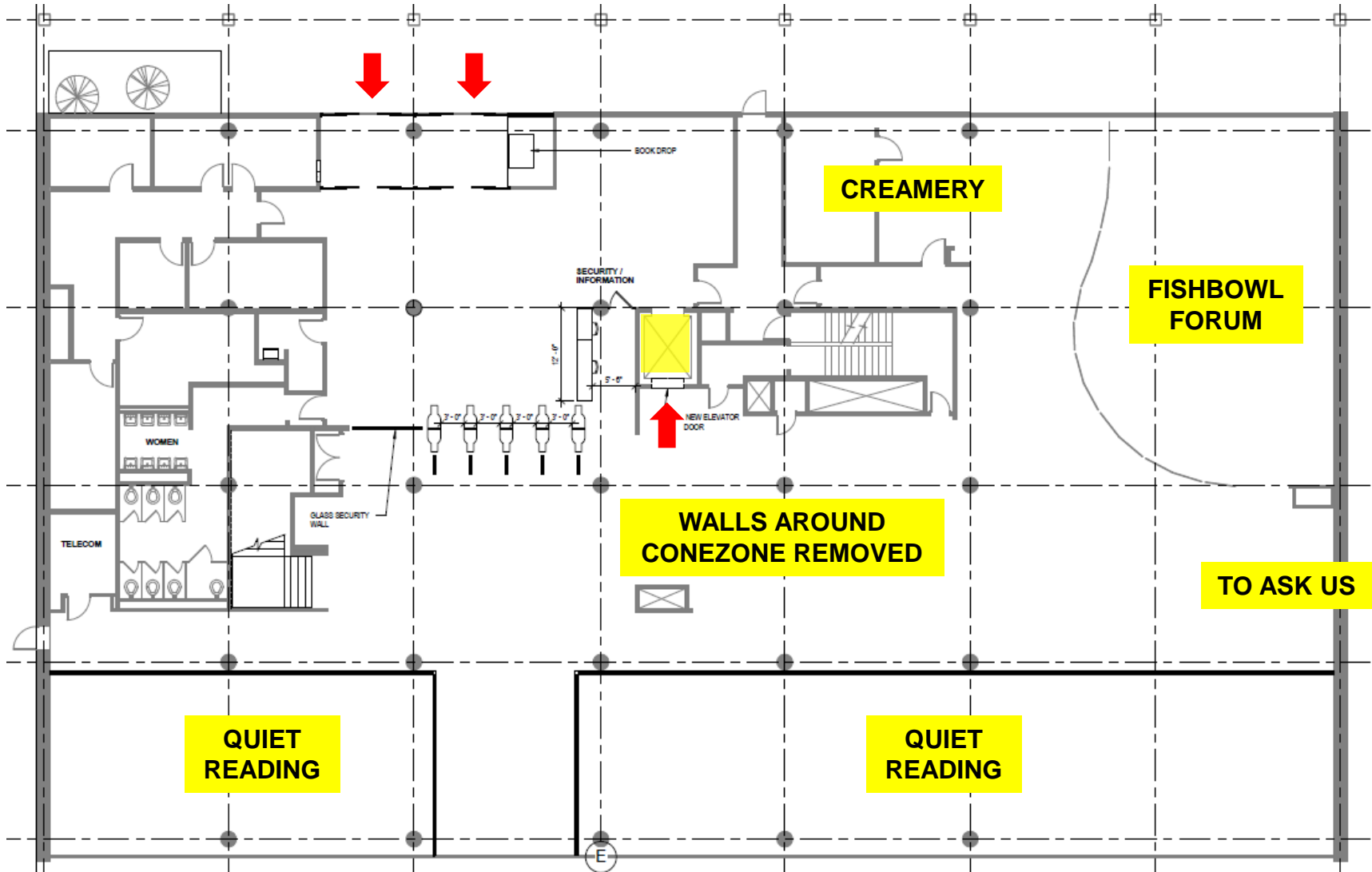
### **Interior scope includes:**

- New entrance doors at existing vestibule
- New window framing at existing vestibule
- Turnstiles with card readers
- Security cameras
- Detection system for collection security
- Security desk

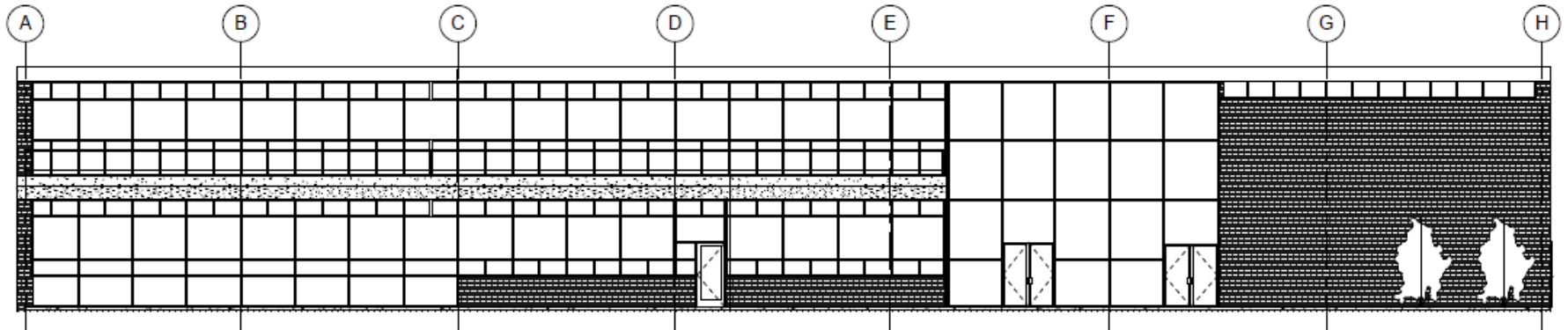
### **Exterior scope includes:**

- Relocate bus stop
- Landscape and sidewalk improvements
- Security improvements (lighting, cameras)
- Bike racks

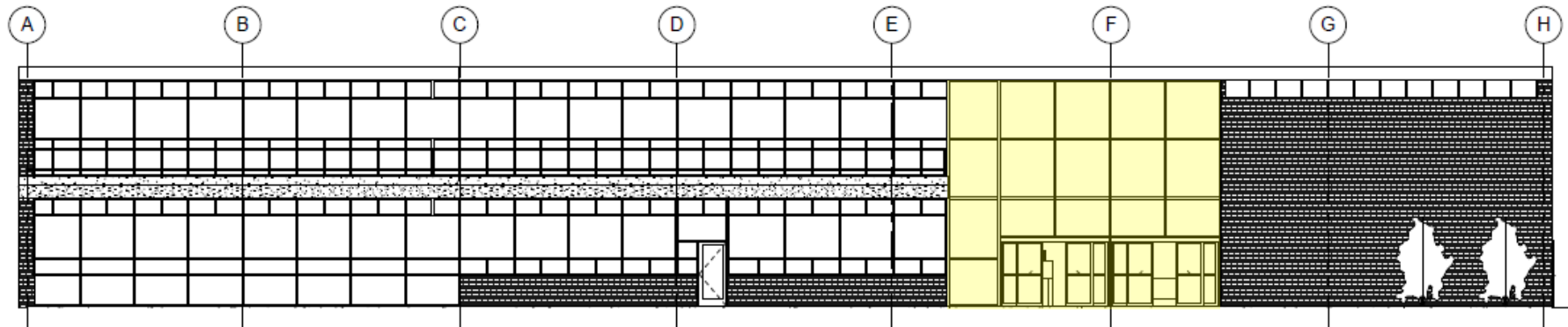
# WEST WING RENOVATION PROJECT HILLSBOROUGH STREET ENTRANCE



# WEST WING RENOVATION PROJECT HILLSBOROUGH STREET ENTRANCE



**EXISTING**

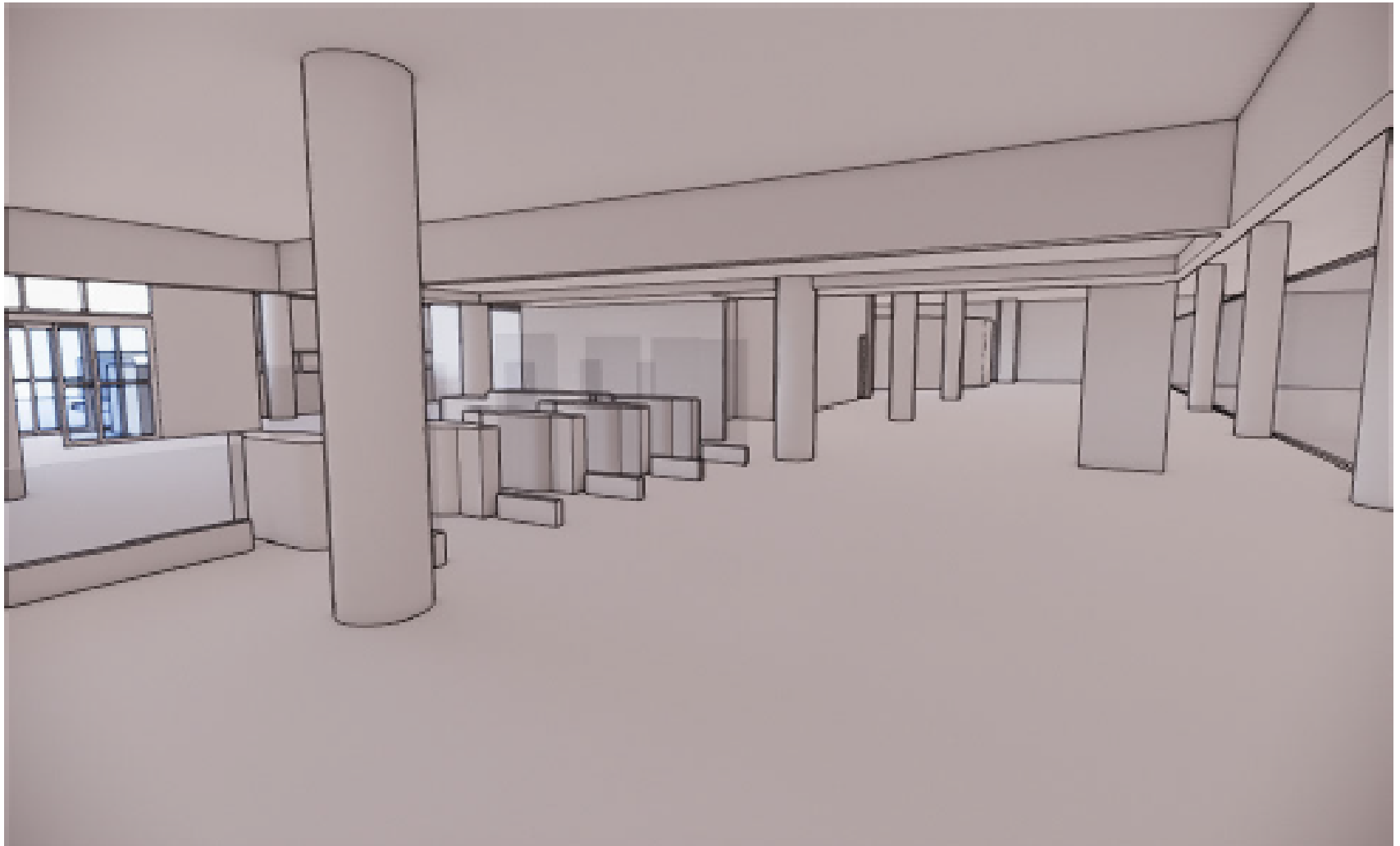


**PROPOSED**

# WEST WING RENOVATION PROJECT HILLSBOROUGH STREET ENTRANCE

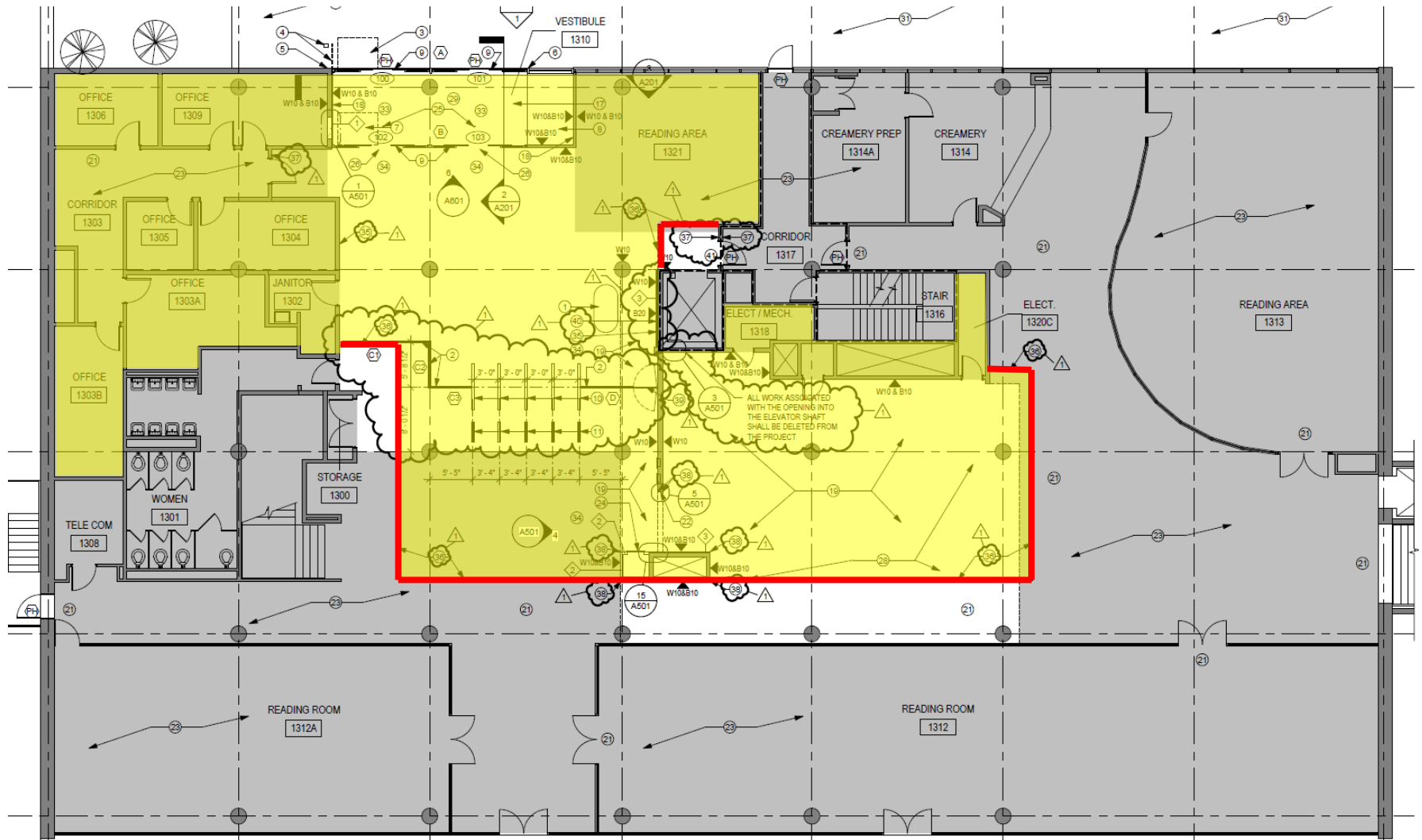


# WEST WING RENOVATION PROJECT HILLSBOROUGH STREET ENTRANCE

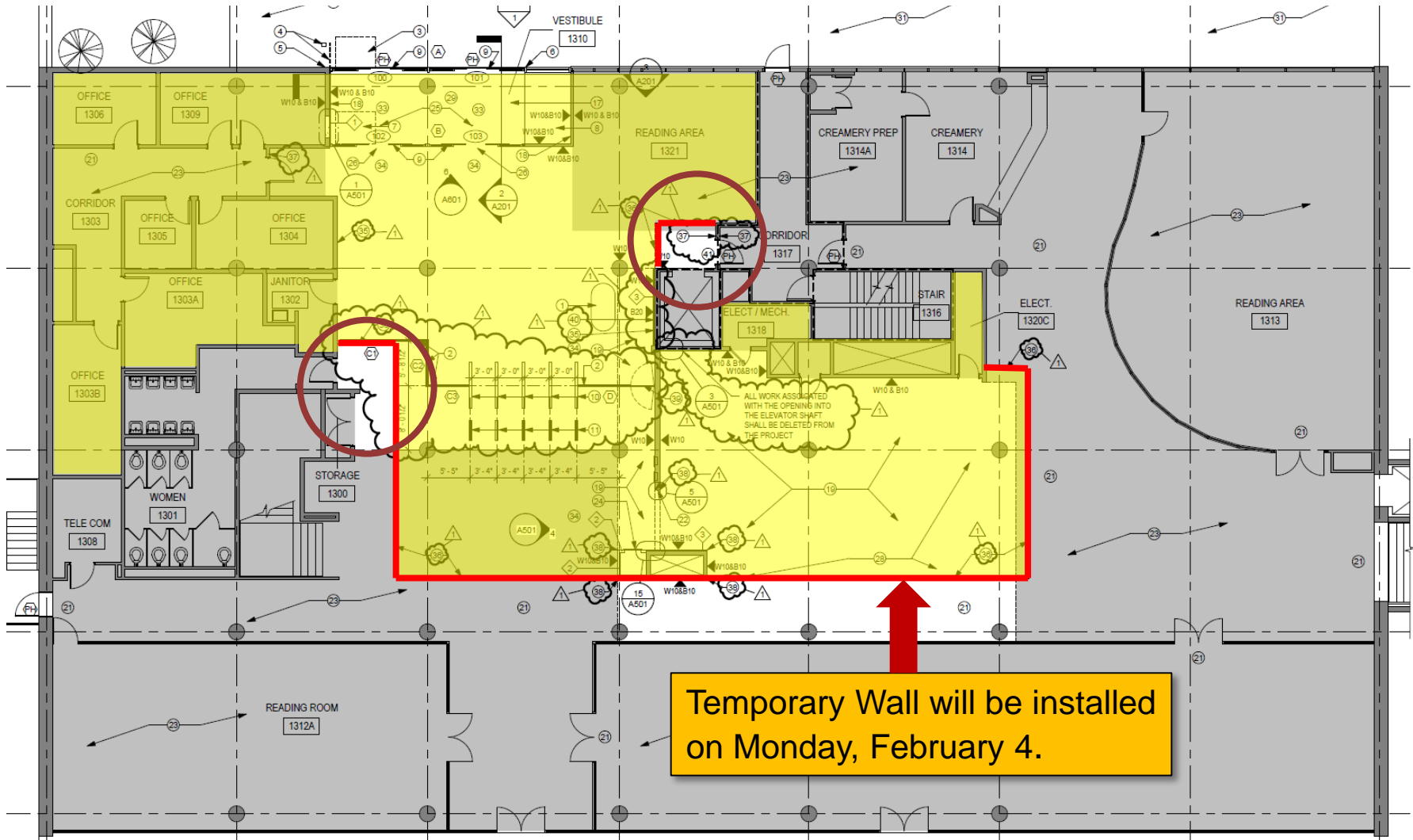




# WEST WING INTERIOR RENOVATION CONSTRUCTION AREA



# WEST WING INTERIOR RENOVATION CONSTRUCTION AREA



# ACCESS TO SECOND FLOOR OF WEST WING



Red line = temporary wall to block access to north portion of Faculty Research Commons.

Room 2312J will need to be emptied of any furniture and equipment, or blocked off.

Rooms 2312E-G do not have door locks. They will need to be blocked in the reservation system, the glass walls will need to be papered over (shown with blue lines), and the doors will need to be secured shut somehow. These rooms contain telephones and A/V equipment.

The double doors circled in orange will need to be secured open, or left unlocked if securing them open creates a dead-end condition.

# ACCESS TO SECOND FLOOR OF WEST WING



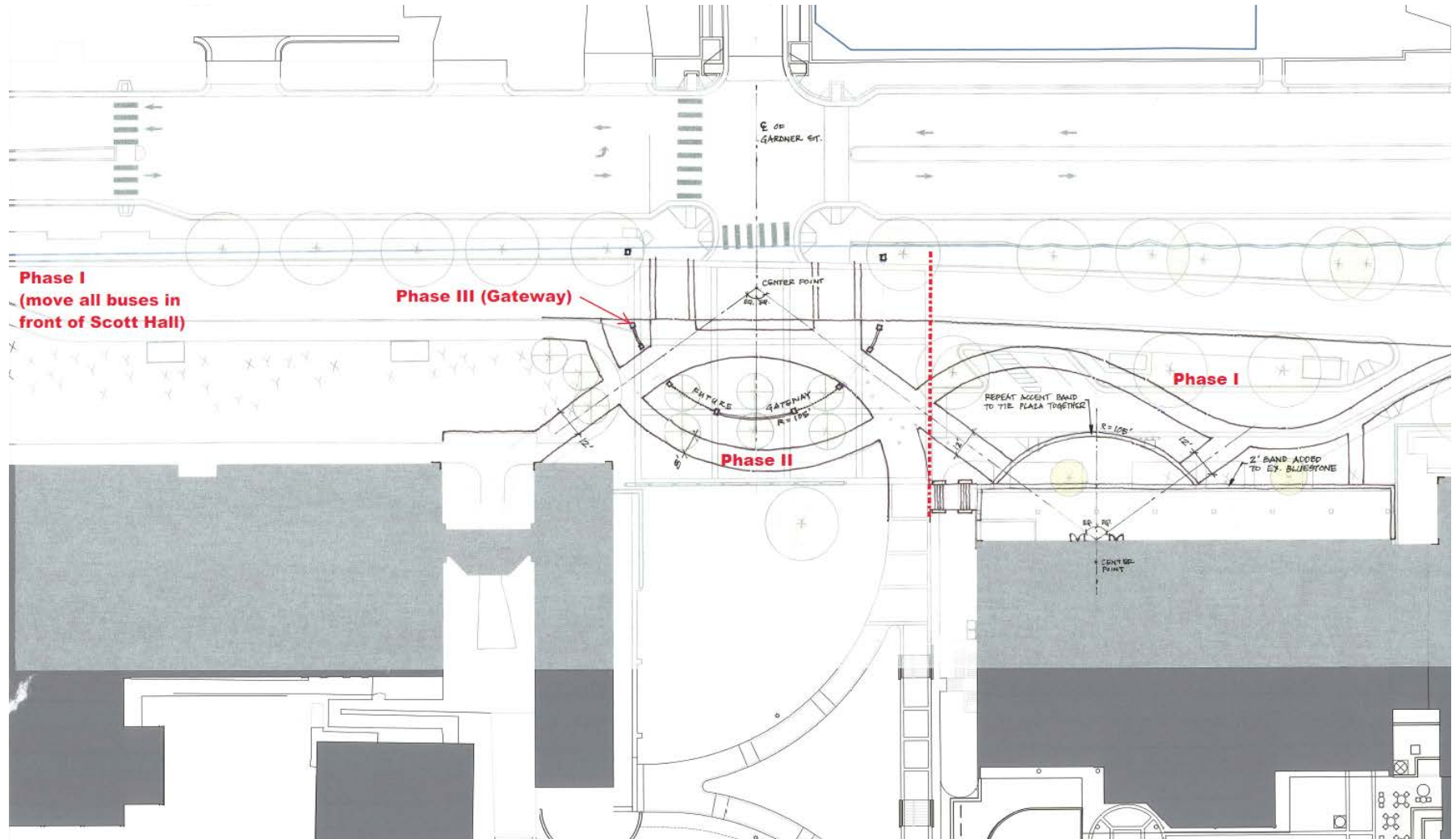
These three rooms will be unavailable until the elevator modernization project is completed.

# INTERFAITH PRAYER AND MEDITATION SPACE



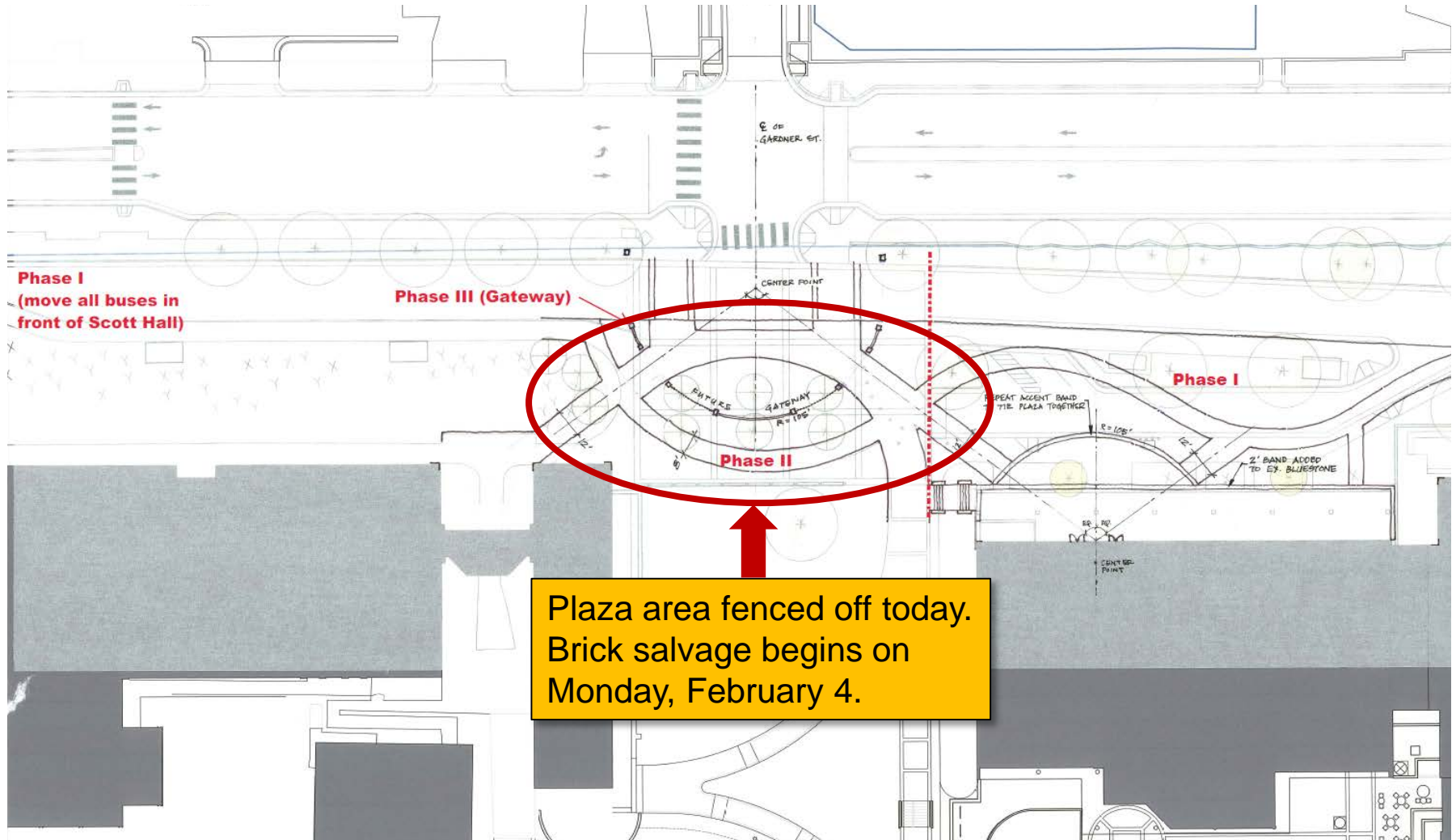
# WEST WING RENOVATION PROJECT

## EXTERIOR WORK



# WEST WING RENOVATION PROJECT

## EXTERIOR WORK

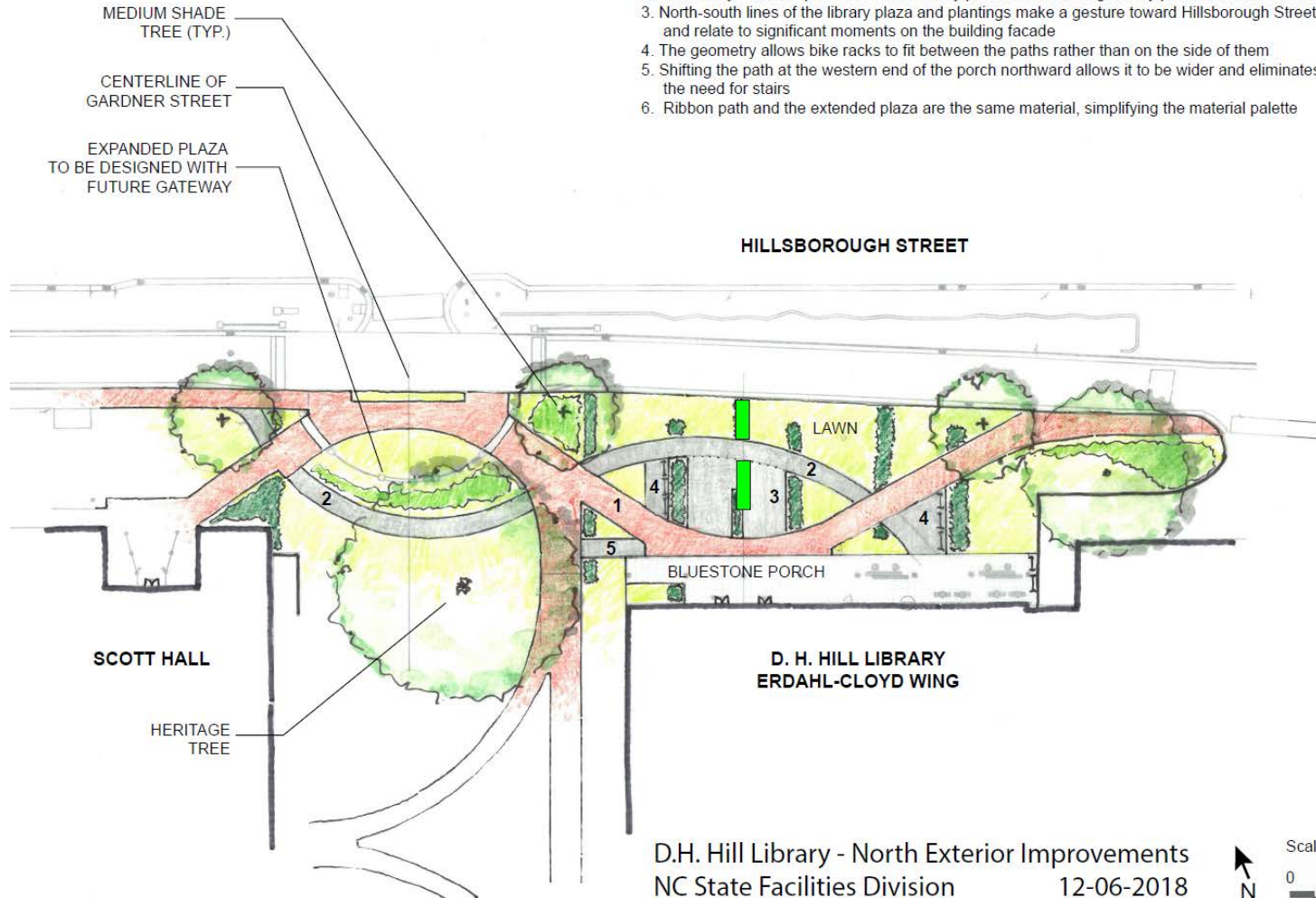


Plaza area fenced off today.  
Brick salvage begins on  
Monday, February 4.

# WEST WING RENOVATION PROJECT

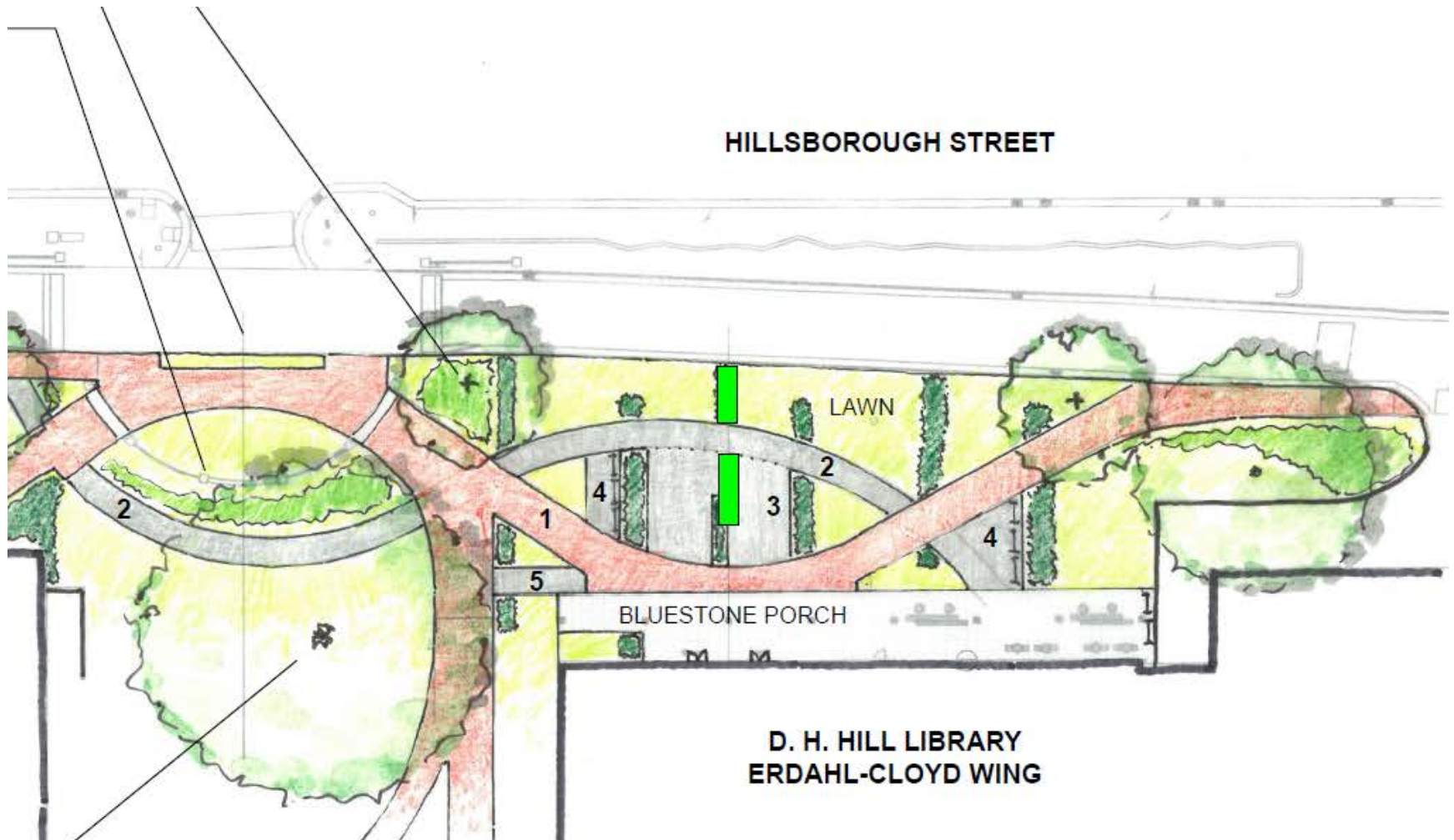
## EXTERIOR WORK

1. Primary red brick paths connect adjacent walks to building entries and the Brickyard
2. Secondary "Ribbon" path relates the library plaza to the future gateway plaza at Gardner Street
3. North-south lines of the library plaza and plantings make a gesture toward Hillsborough Street, and relate to significant moments on the building facade
4. The geometry allows bike racks to fit between the paths rather than on the side of them
5. Shifting the path at the western end of the porch northward allows it to be wider and eliminates the need for stairs
6. Ribbon path and the extended plaza are the same material, simplifying the material palette

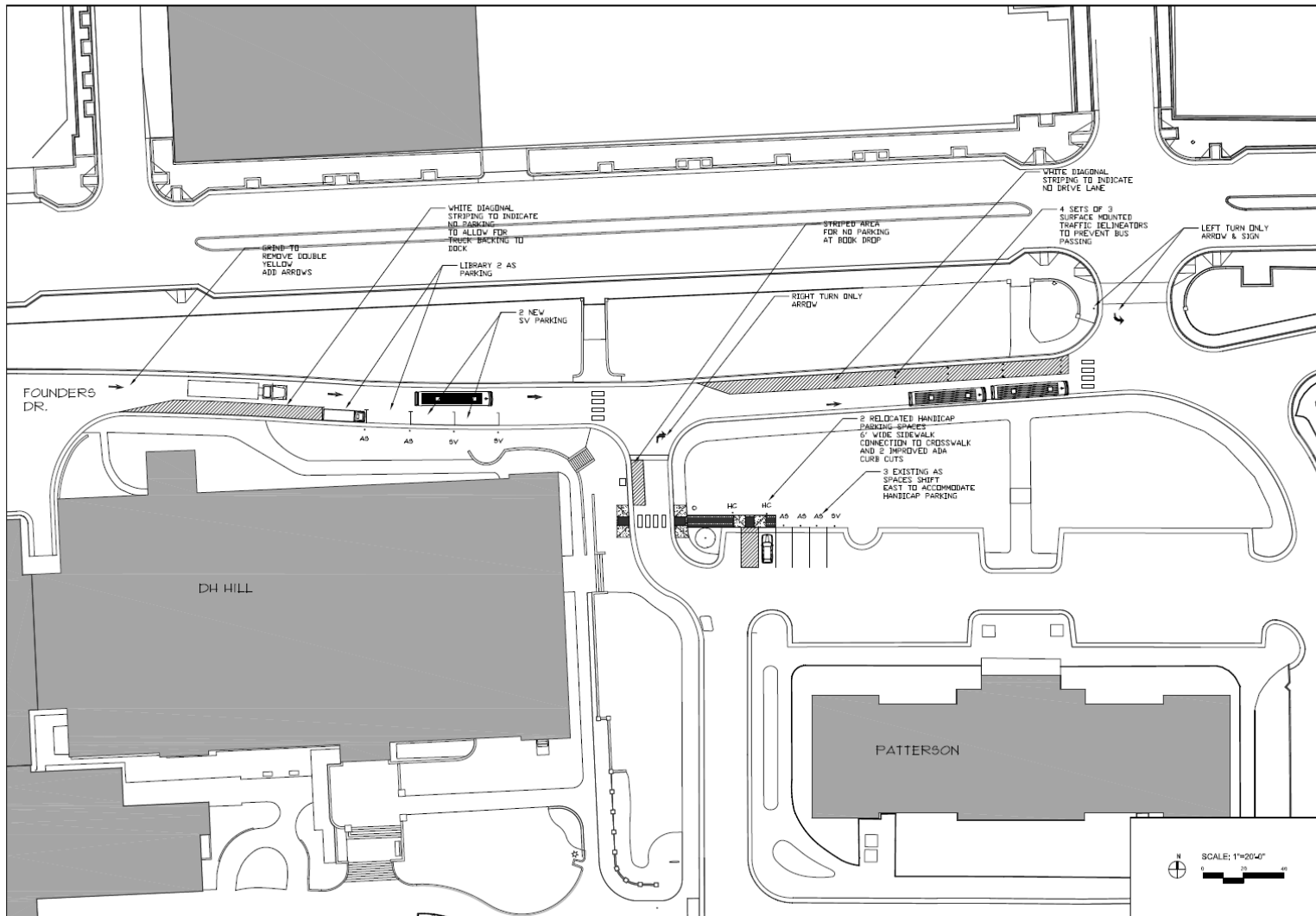




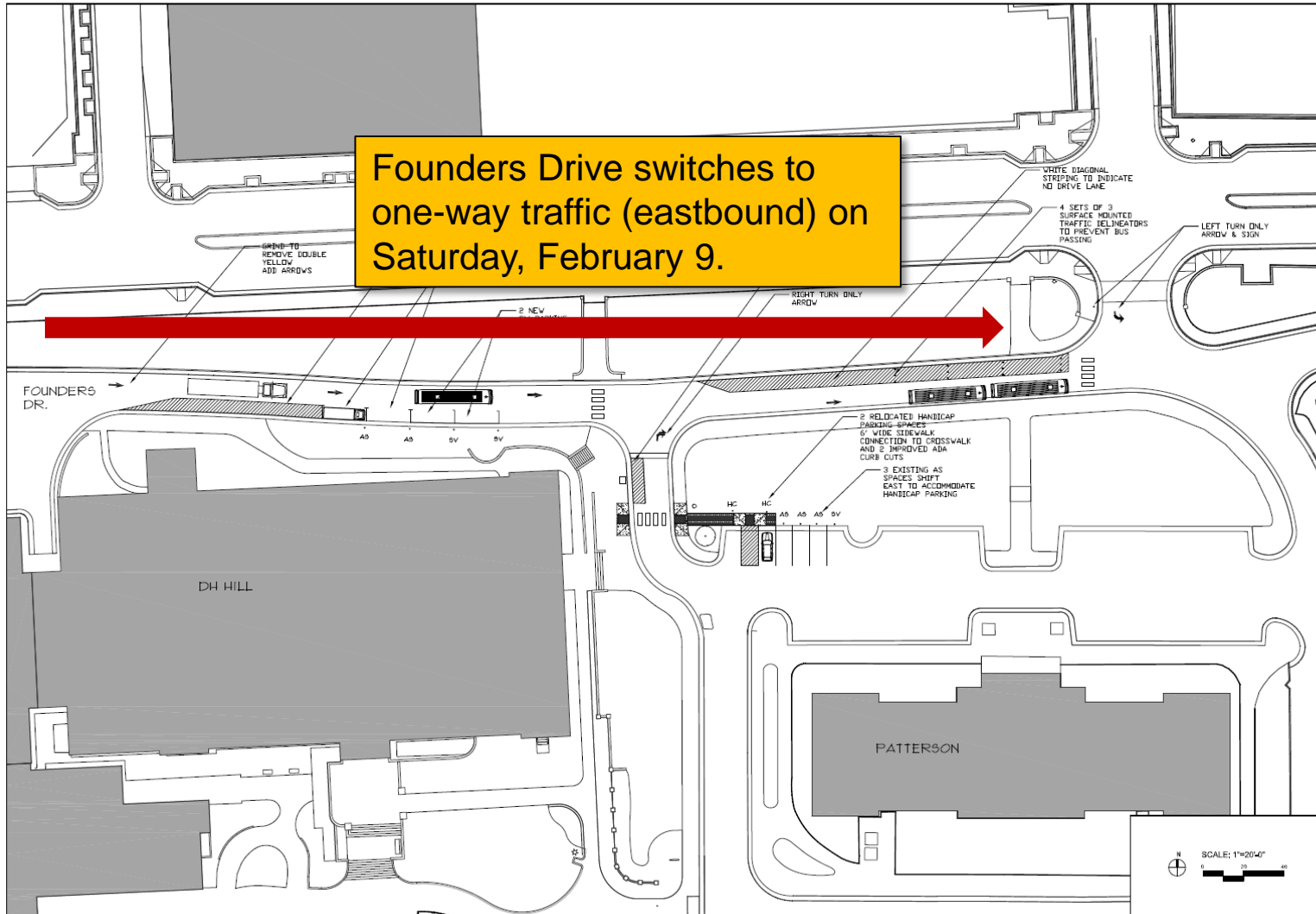
# WEST WING RENOVATION PROJECT EXTERIOR WORK



# WEST WING RENOVATION PROJECT EXTERIOR WORK

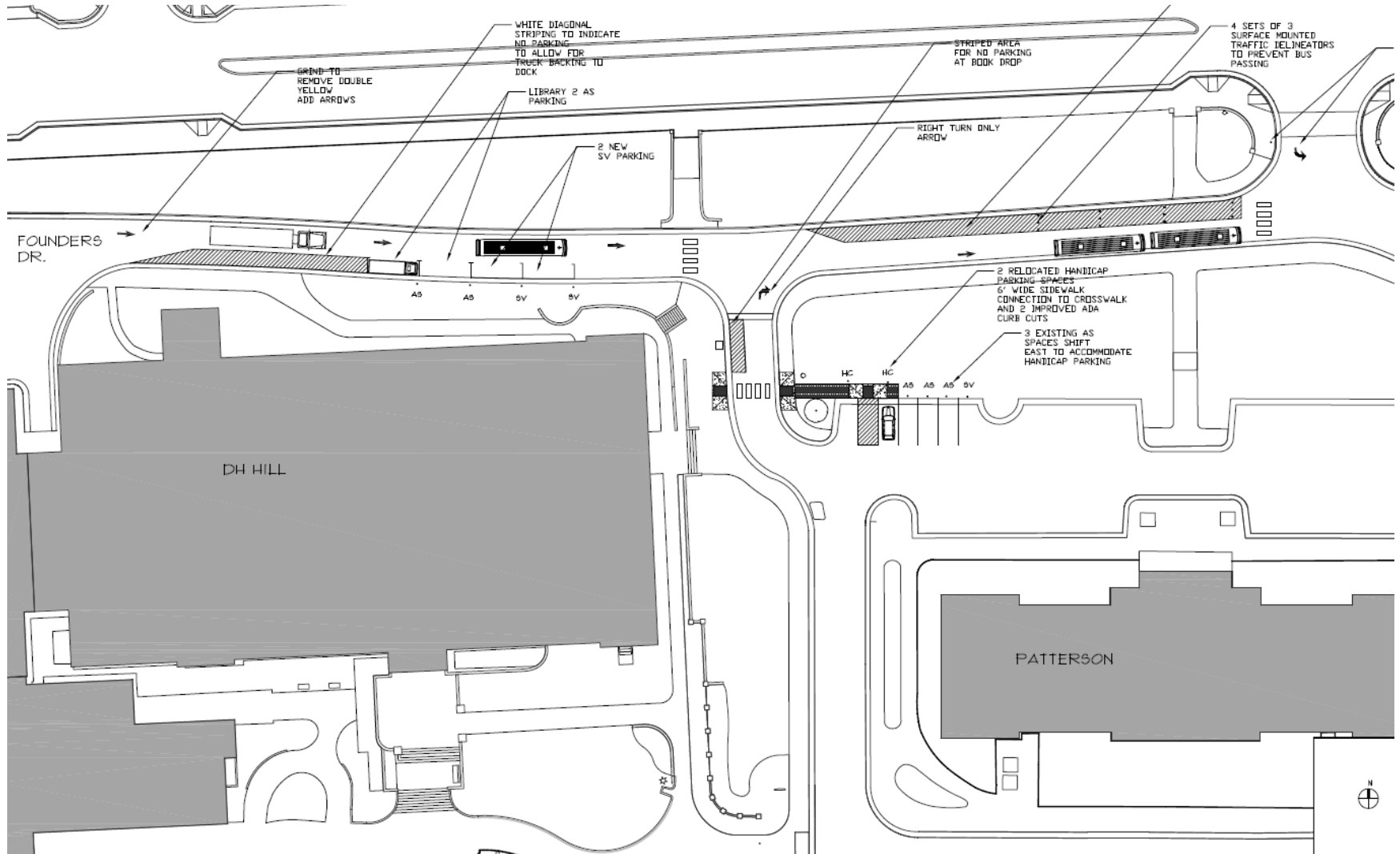


# WEST WING RENOVATION PROJECT EXTERIOR WORK



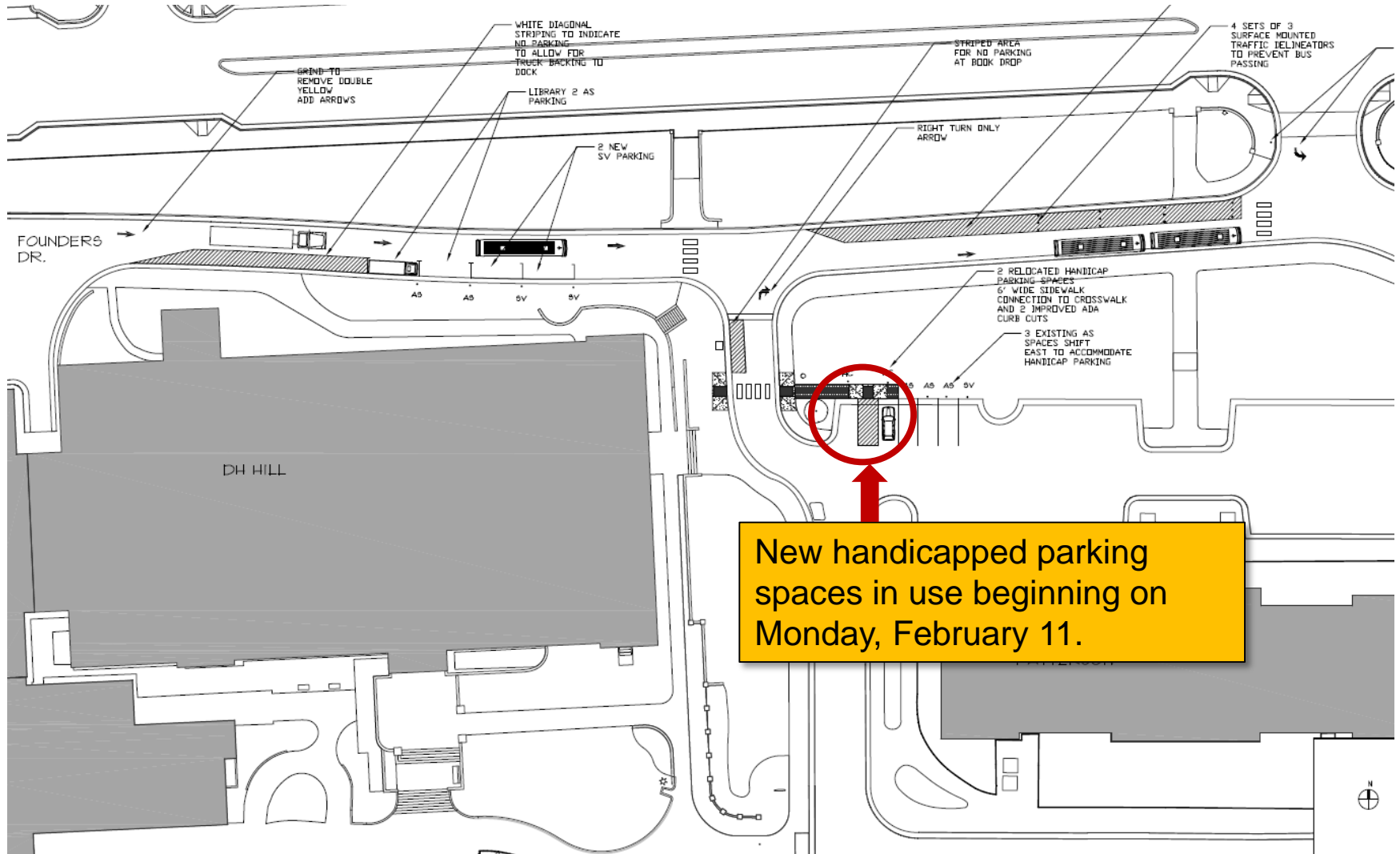
# WEST WING RENOVATION PROJECT

## EXTERIOR WORK



# WEST WING RENOVATION PROJECT

## EXTERIOR WORK



# HILL LIBRARY RENOVATION PROJECT

## MAJOR IMPACTS ON STUDENTS AND FACULTY

1. The Hillsborough Street entrance opens in April/May 2019, and remains open after the renovation is completed. This area will be under construction from late January through late April of 2019.
2. The Brickyard entrance closes in May 2019, and re-opens in July/August 2020.
3. These areas will be closed in the south tower (May 2019 through July/August 2020): main entrance, Ground Floor Reading Room, Hill of Beans, Game Space, second floor, third floor, fourth floor, elevators.
4. These areas will be closed in the north tower (May 2019 through July/August 2020): second floor, third floor, fourth floor.
5. While the Hill of Beans is closed, coffee and snacks will be available at The Creamery in the West Wing.
6. For a few weeks in the summer of 2019, the Ask Us desk services will be relocated, probably to the Learning Commons in the East Wing.
7. The Assistive Technologies Center (ATC) will be relocated. The Interfaith Prayer and Meditation Space will be relocated.
8. Until the West Wing elevator has been modernized, the elevator in the Faculty Research Commons will be used for disabled persons to reach the second floor. A temporary wall will divide the circulation route from the remainder of the Faculty Research Commons.

# HILL LIBRARY RENOVATION PROJECT

## MAJOR IMPACTS ON STUDENTS AND FACULTY

1. The Hillsborough Street entrance opens in April/May 2019, and remains open after the renovation is completed. **This area will be under construction from late January through late April of 2019.**
2. The Brickyard entrance closes in May 2019, and re-opens in July/August 2020.
3. These areas will be closed in the south tower (May 2019 through July/August 2020): main entrance, Ground Floor Reading Room, Hill of Beans, Game Space, second floor, third floor, fourth floor, elevators.
4. These areas will be closed in the north tower (May 2019 through July/August 2020): second floor, third floor, fourth floor.
5. While the Hill of Beans is closed, coffee and snacks will be available at The Creamery in the West Wing.
6. For a few weeks in the summer of 2019, the Ask Us desk services will be relocated, probably to the Learning Commons in the East Wing.
7. The Assistive Technologies Center (ATC) will be relocated. **The Interfaith Prayer and Meditation Space will be relocated.**
8. **Until the West Wing elevator has been modernized, the elevator in the Faculty Research Commons will be used for disabled persons to reach the second floor. A temporary wall will divide the circulation route from the remainder of the Faculty Research Commons.**

# Update on West Wing Renovation at Hill Library



University Library Committee ♦ February 1, 2019