



LORD
AECK
SARGENT

Design Progress Update

January 22, 2018



Agenda

Background

Space concepts:

- Ribbon
- Stream

Fourth floor & mechanical options

Review of Project Goals

1. Create a sense of arrival and establish a visual connection from the ground floor to the upper levels
2. Provide a hub for academic and technology services
3. Encourage exploration of library spaces, rewarded by discovery
4. Integrate technology to enhance wayfinding and provide opportunities for showcase
5. Anticipate a future additional renovation project to include desired Third Floor spaces

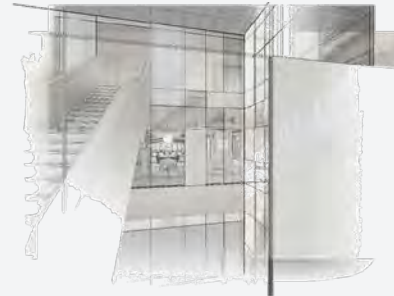


Prior Concept Feedback

Selected “ribbon” and “box” concepts for further development

Requested further development of concept in adjoining spaces and 3rd floor

Wanted a stronger connection between the horizontal space concepts and the stair hall.

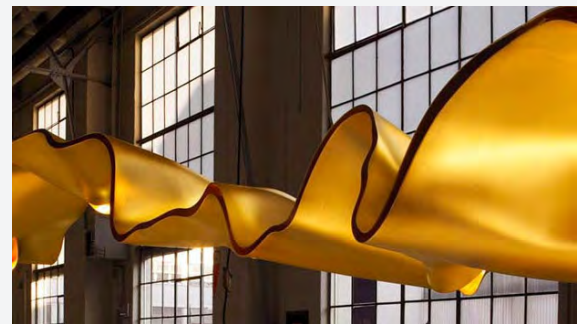




Space Concepts



Ribbon: Inspiration



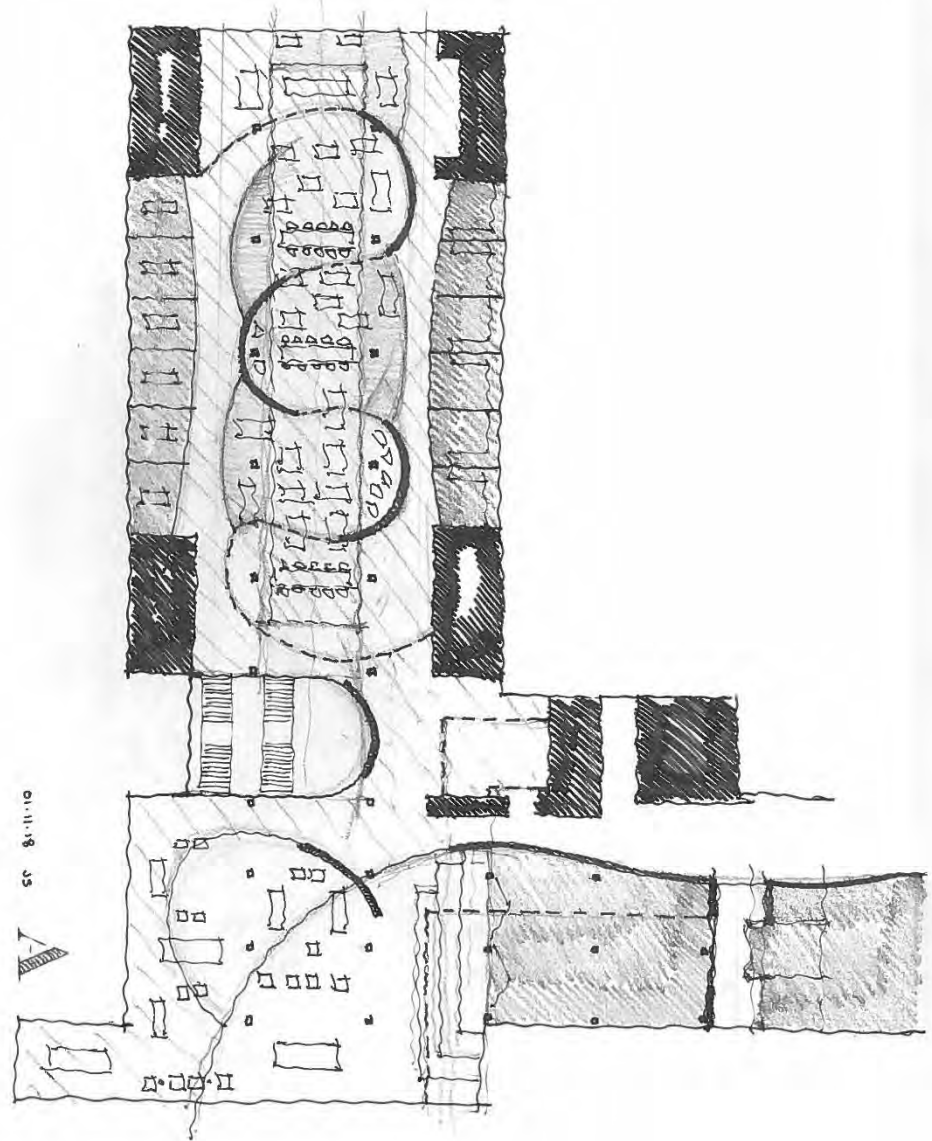


Ribbon: Inspiration





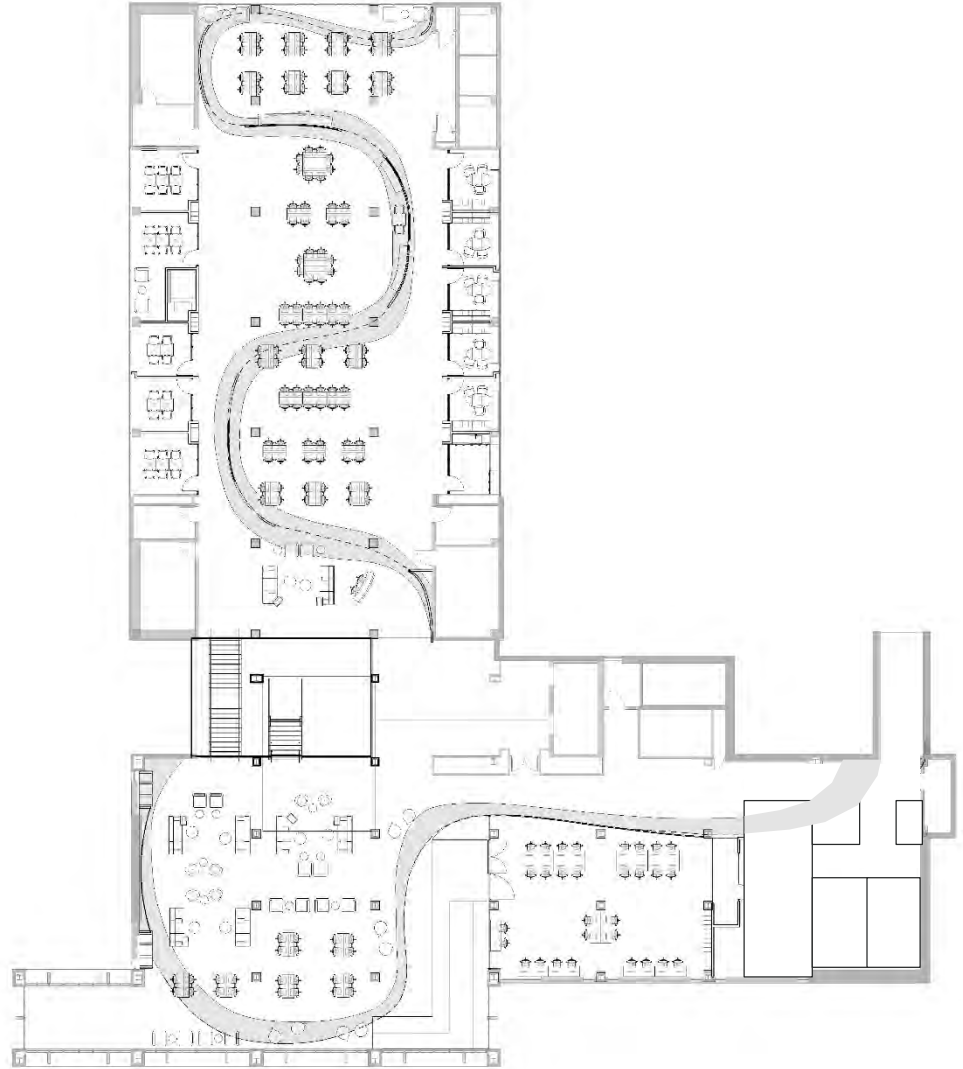
Ribbon: Process Sketch





Ribbon

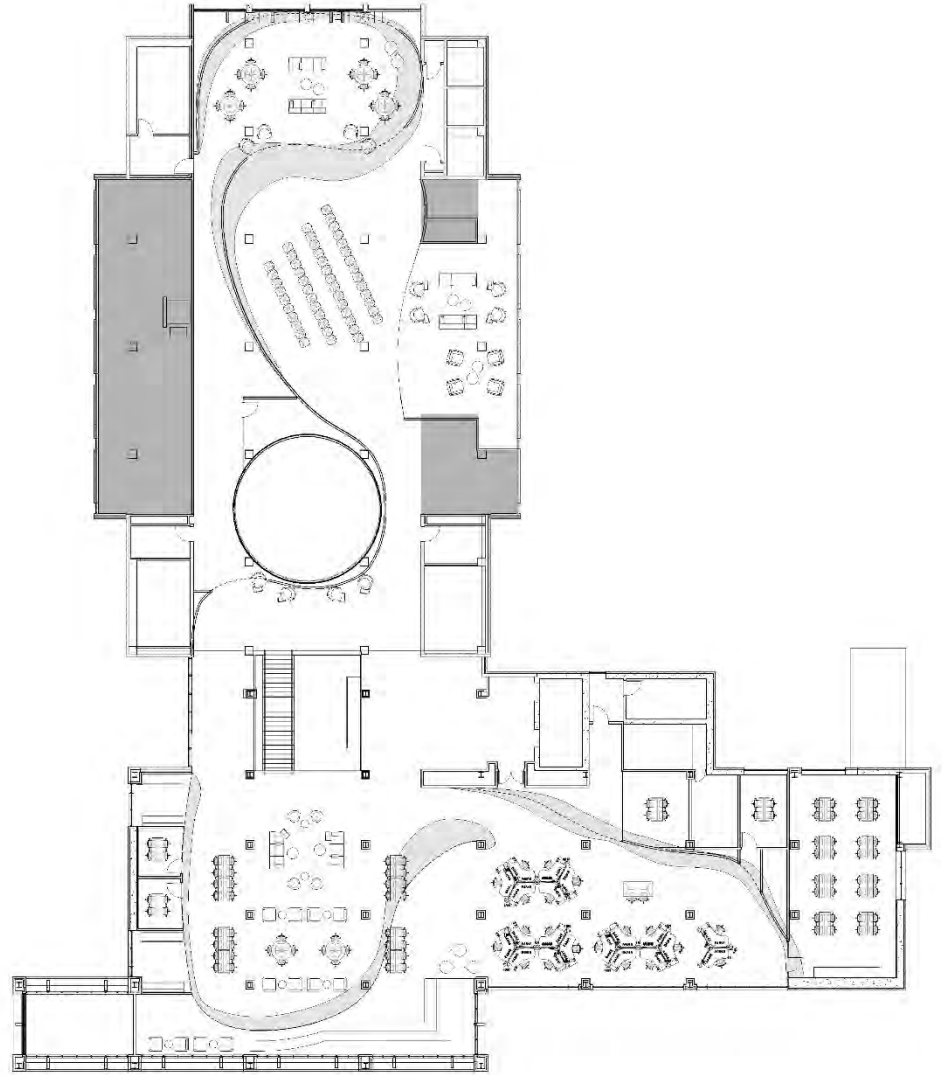
Second Floor

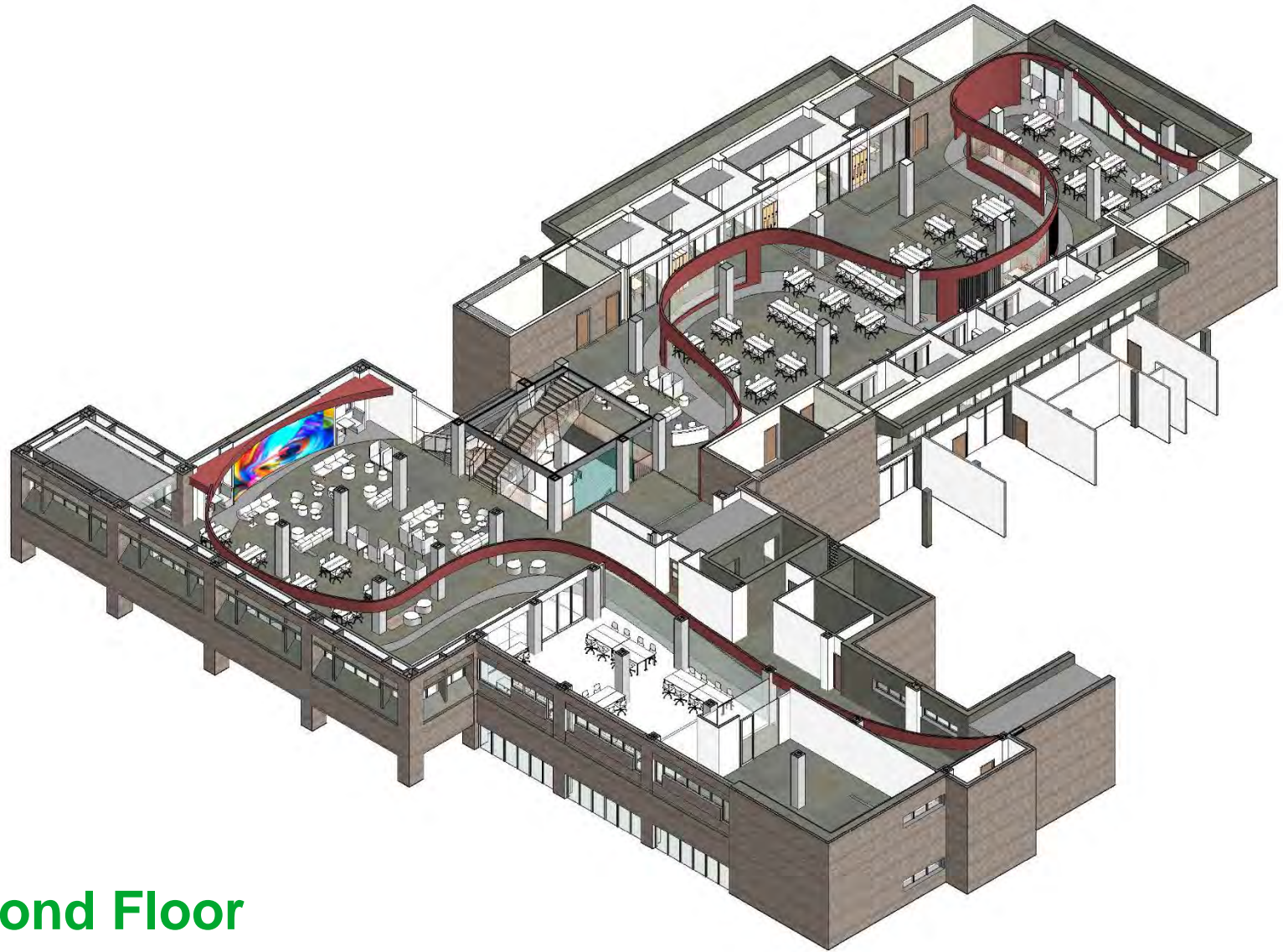




Ribbon

Third Floor



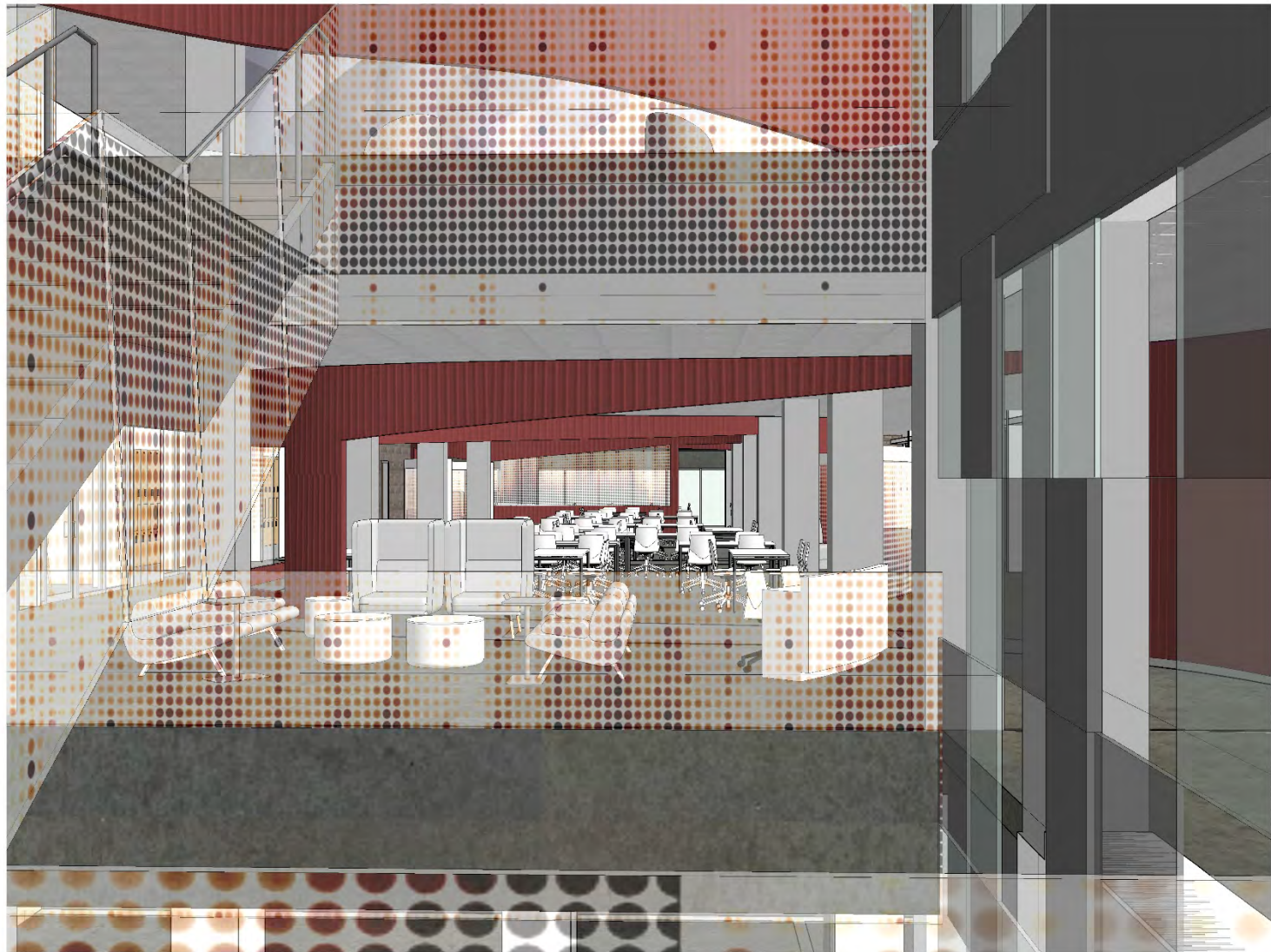


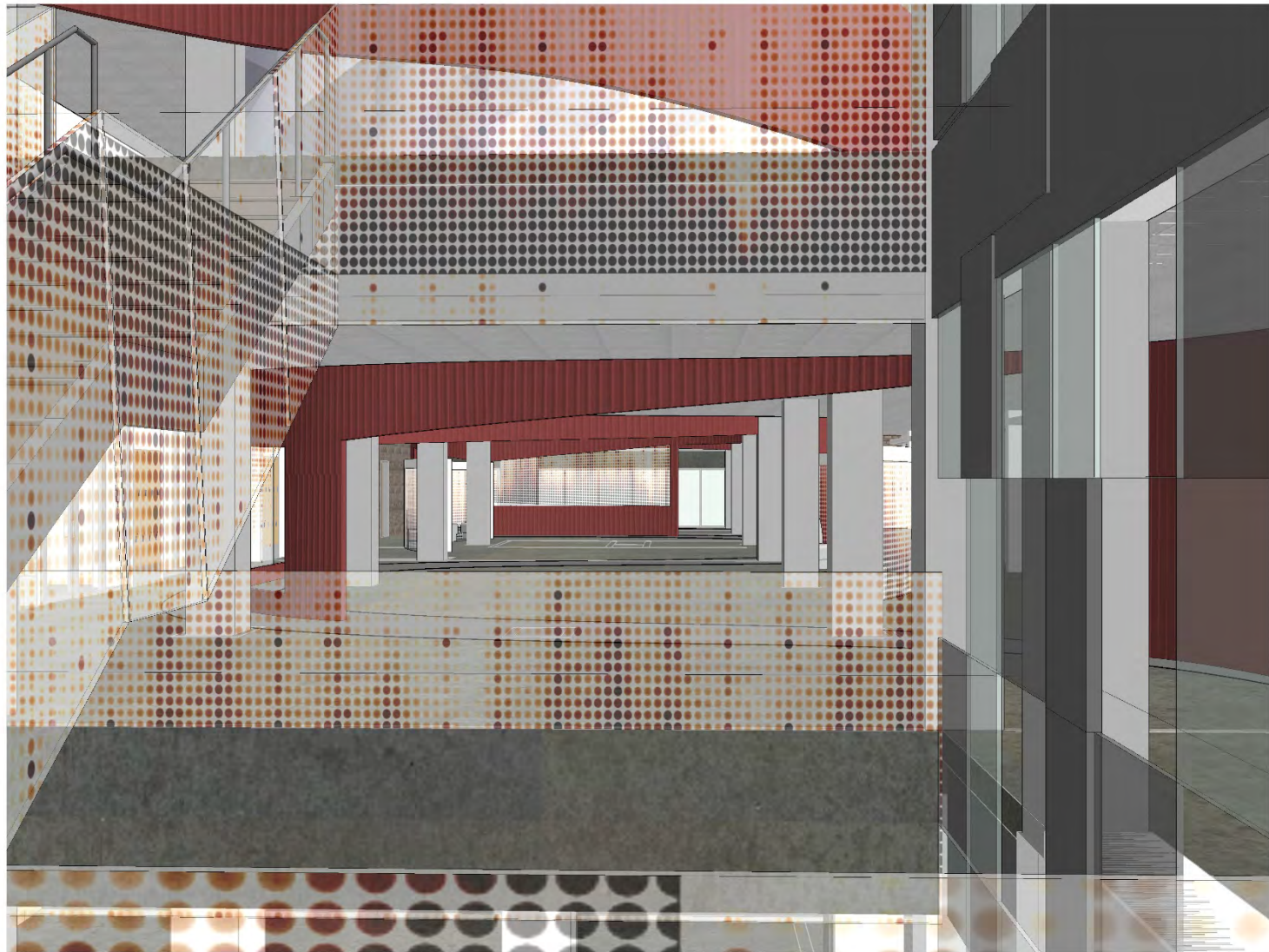
Second Floor



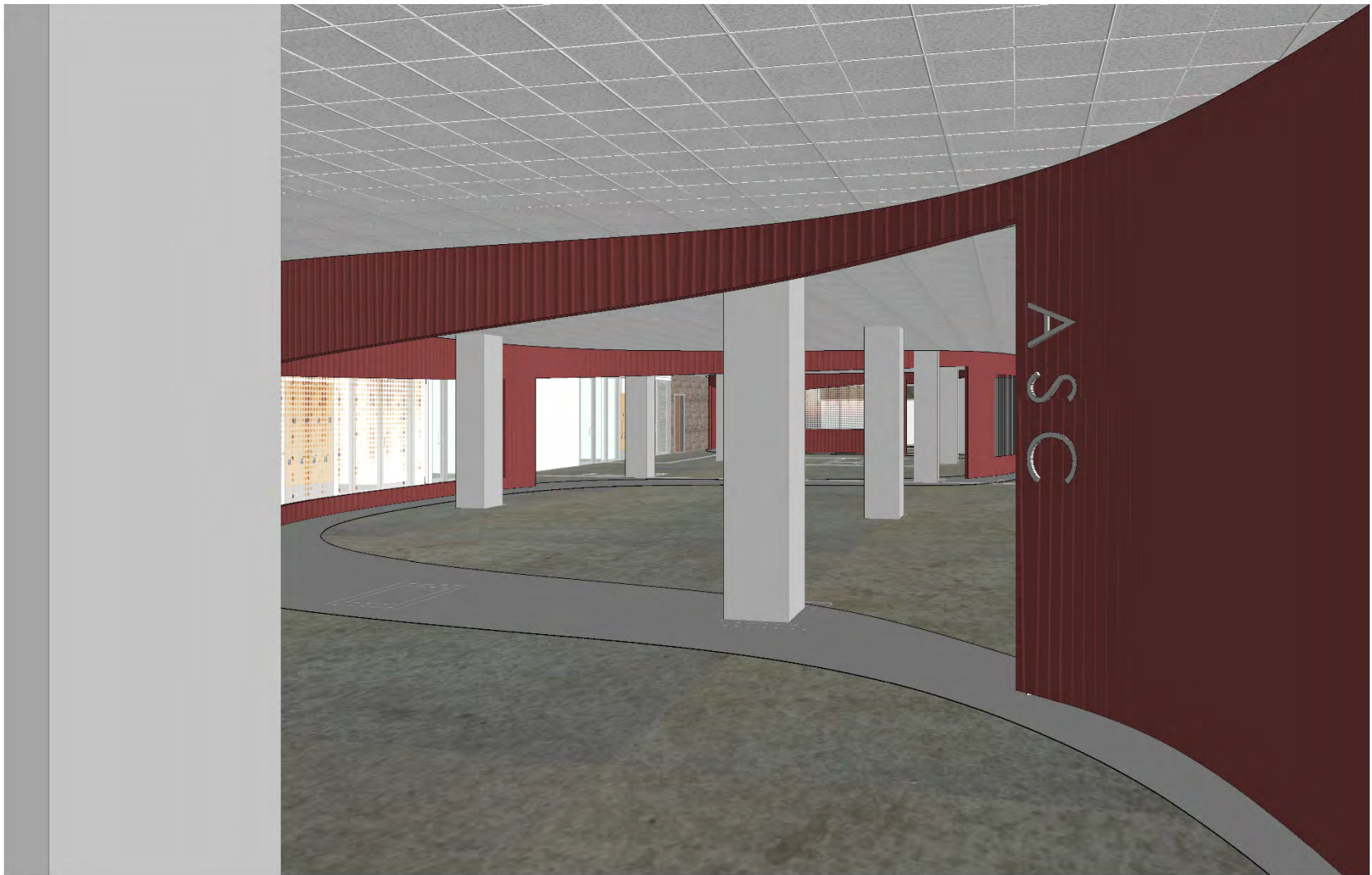




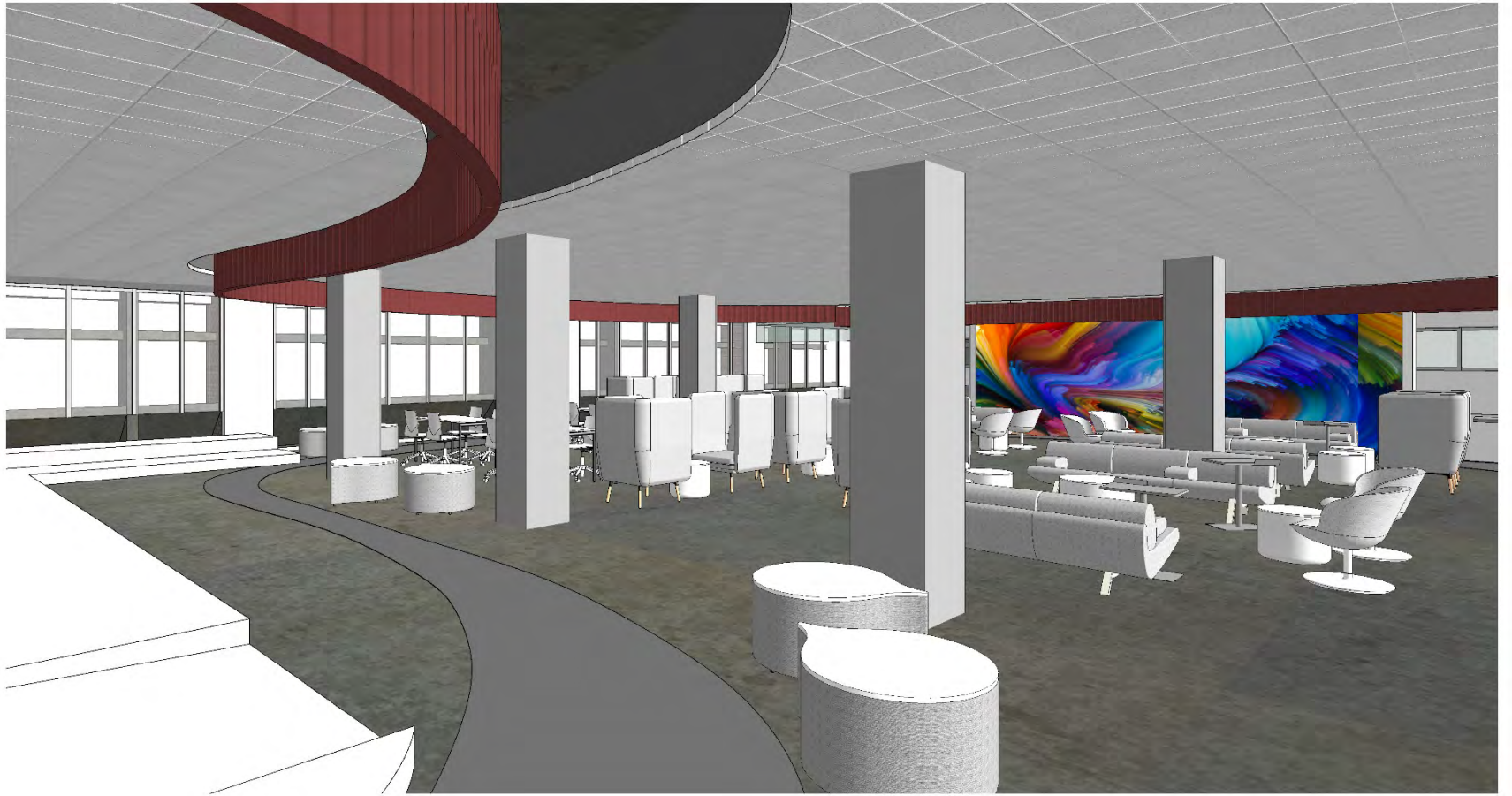








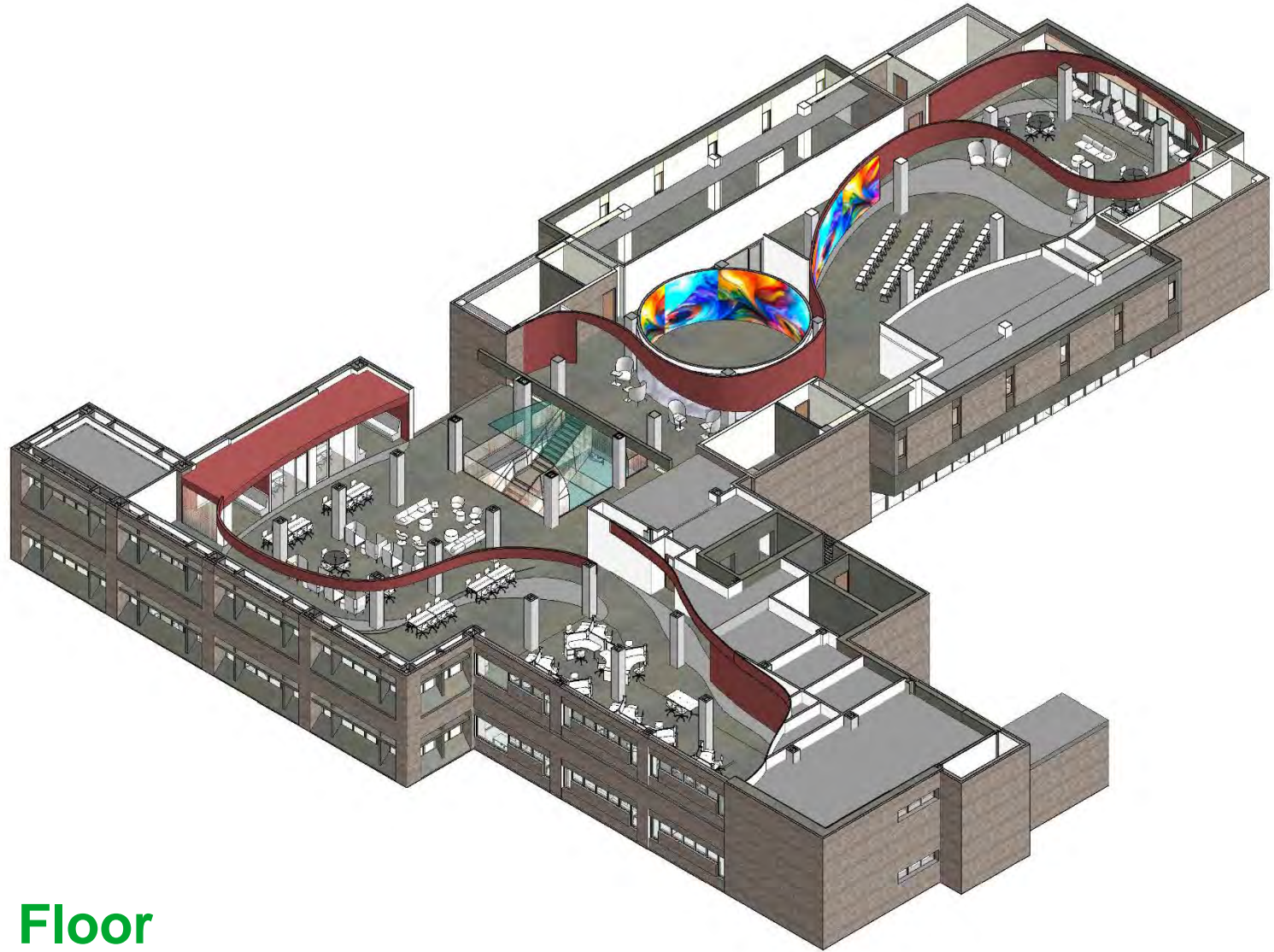






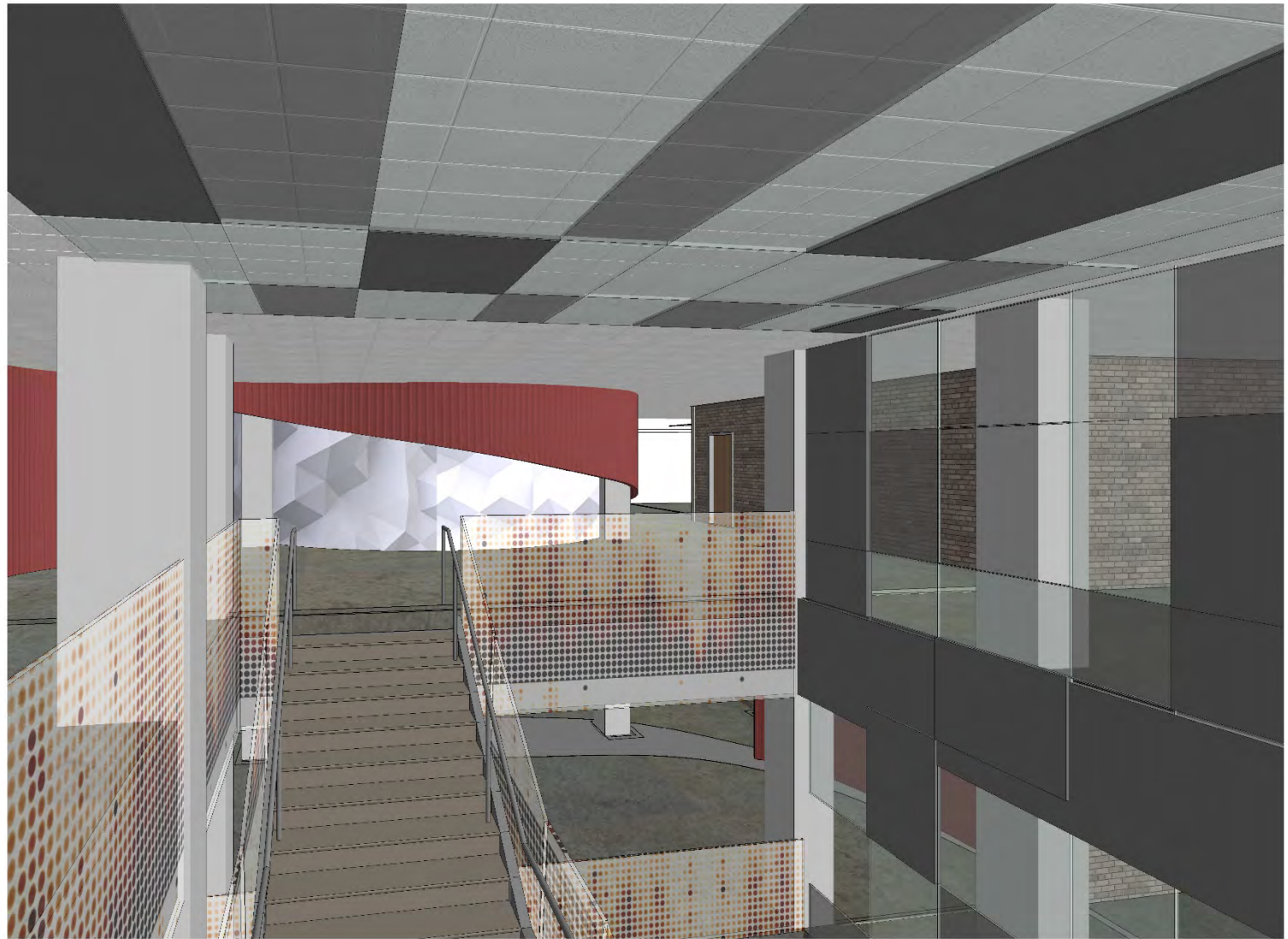






Third Floor

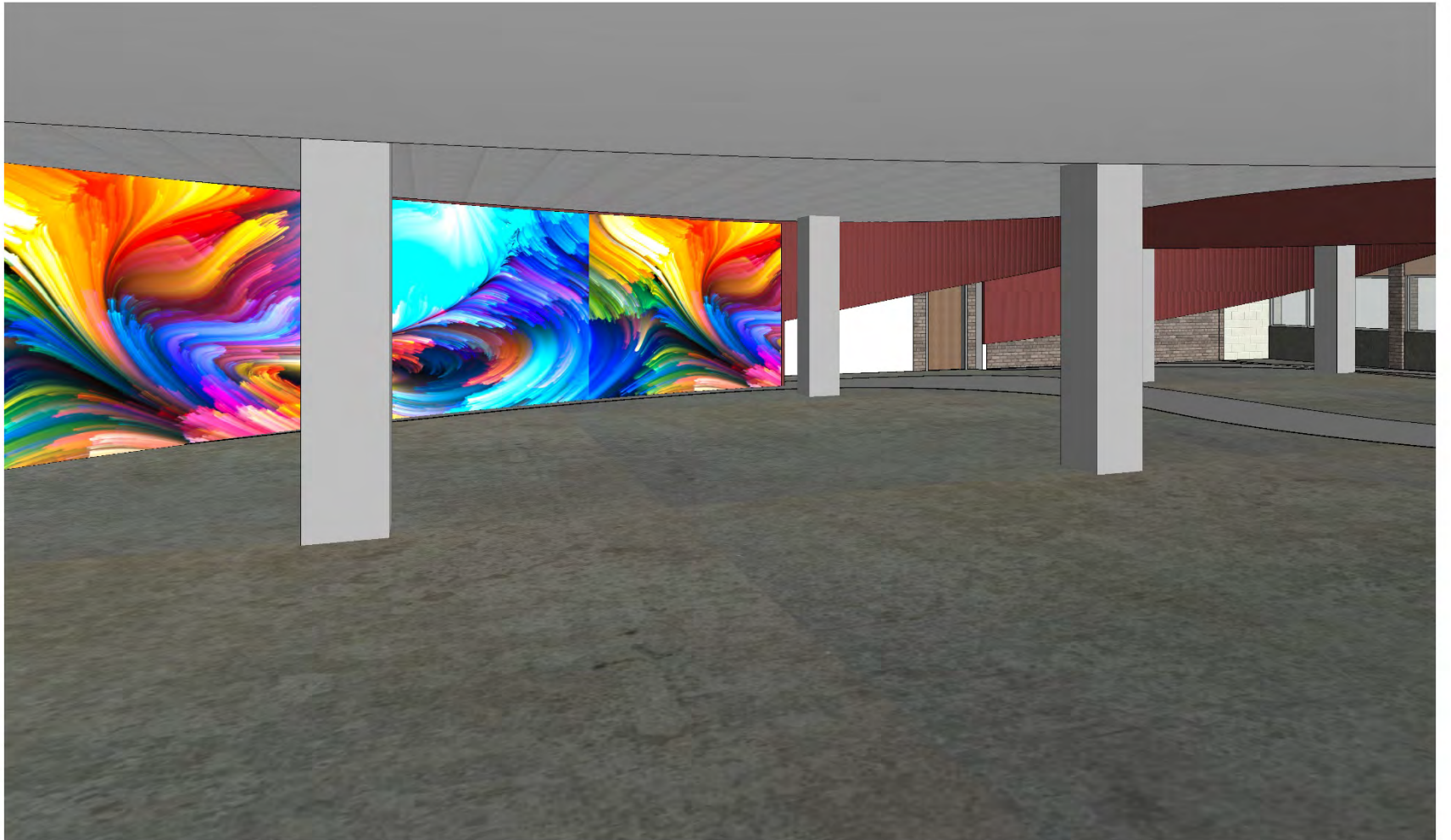














Stream: Inspiration



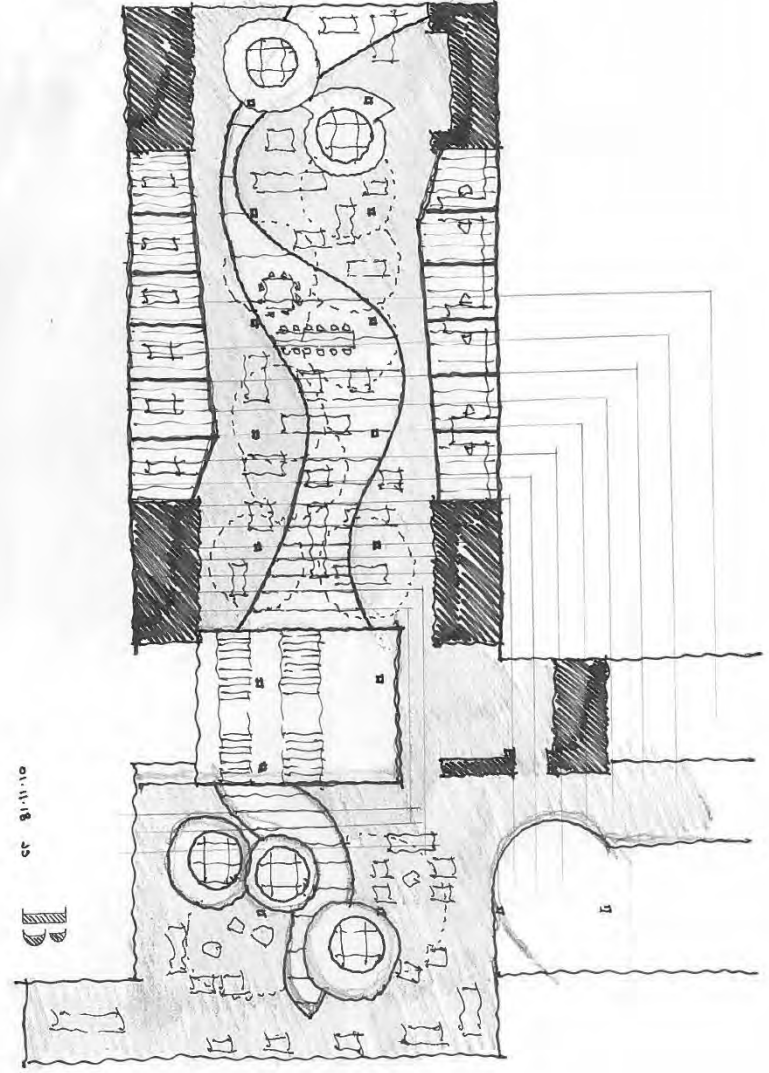


Stream: Inspiration





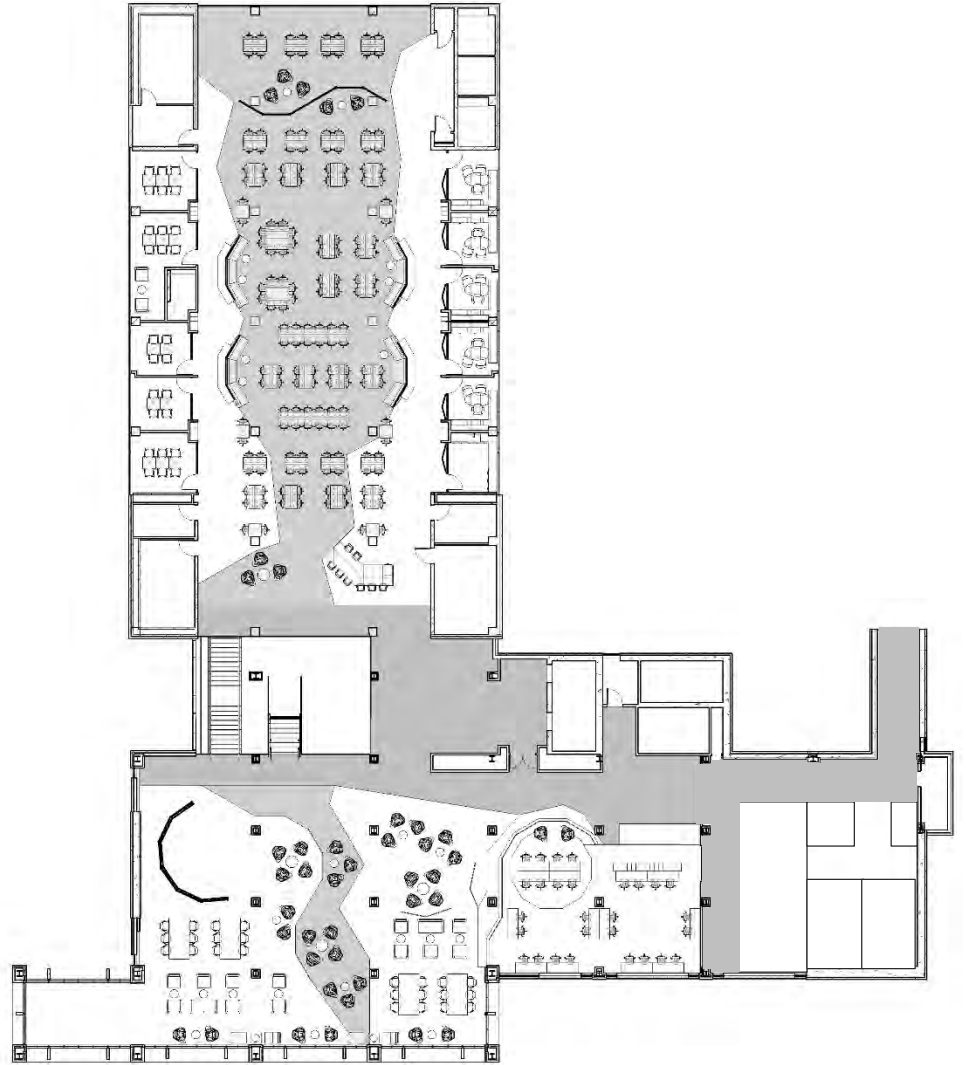
Stream: Process Sketch





Stream

Second Floor

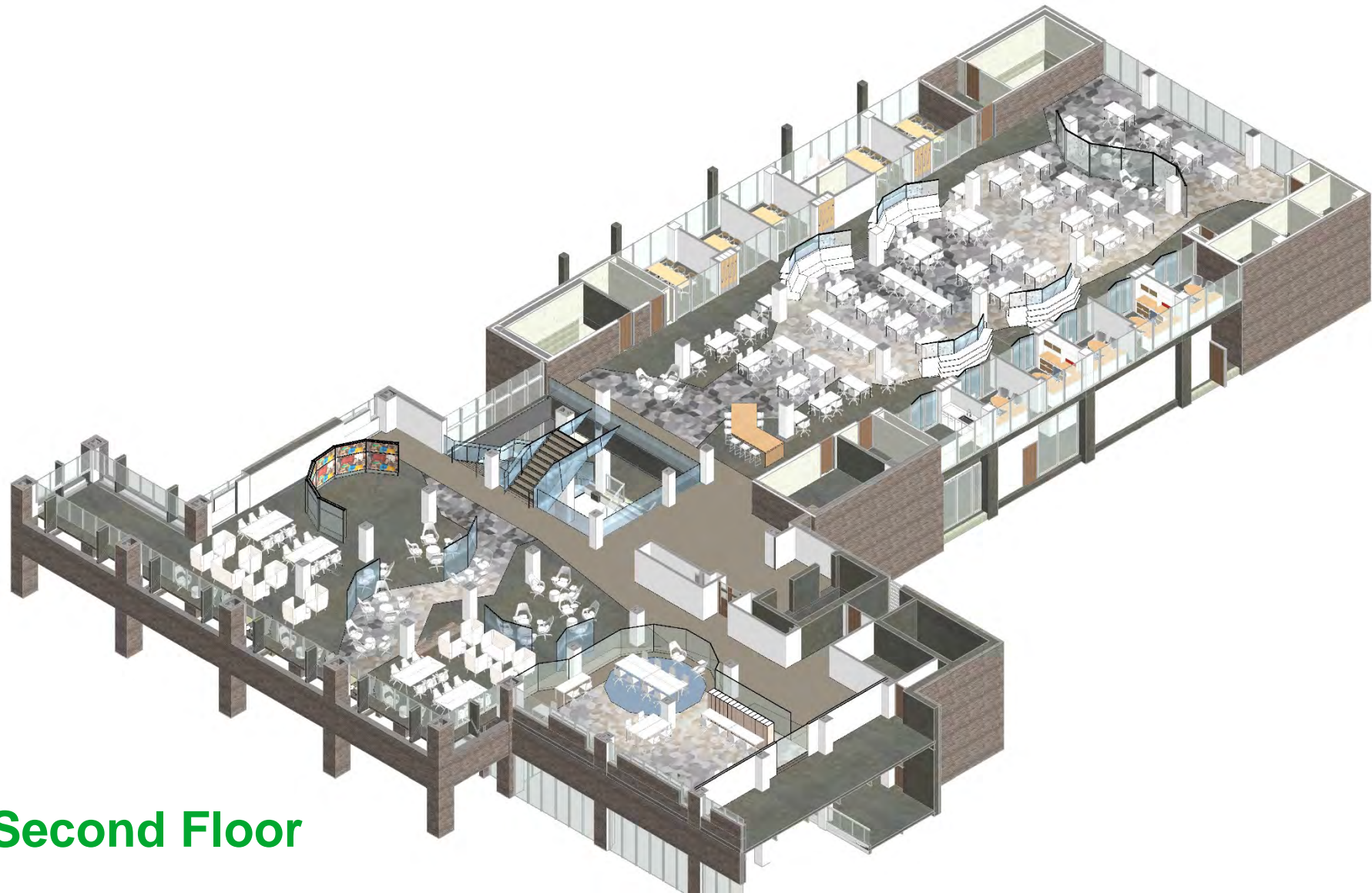




Stream

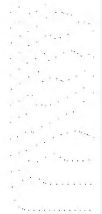
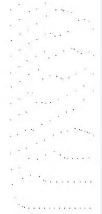
Third Floor

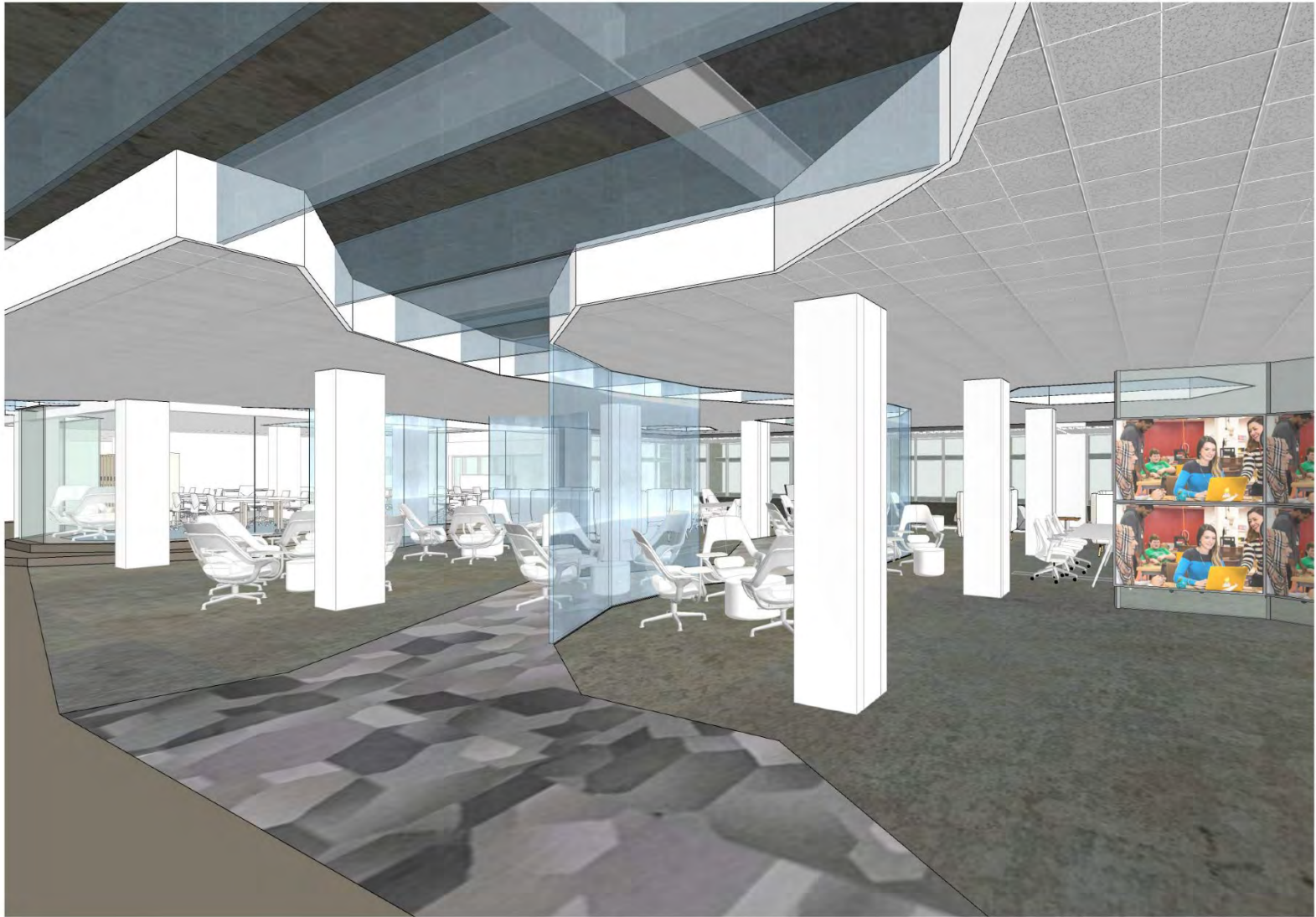


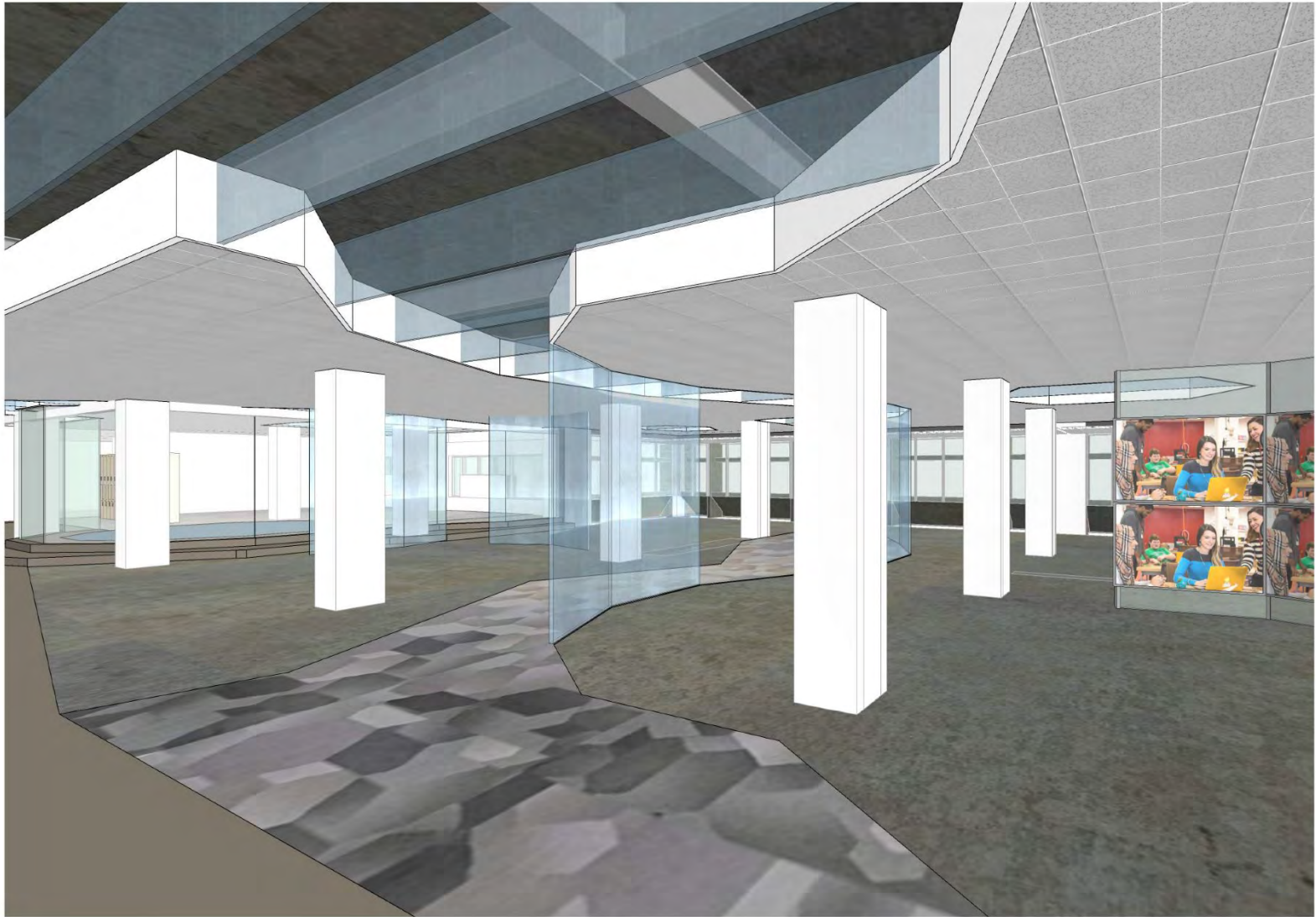


Second Floor









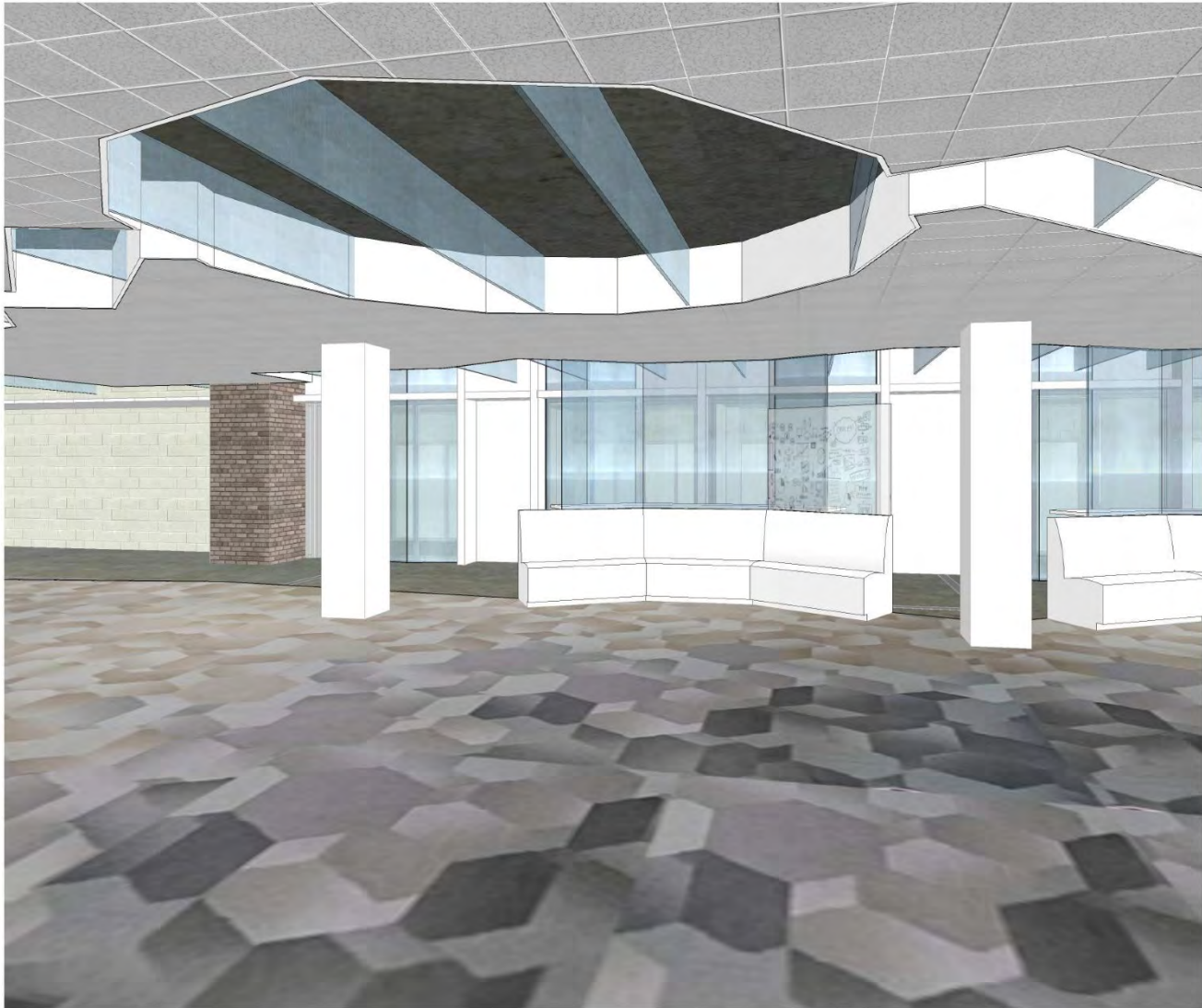




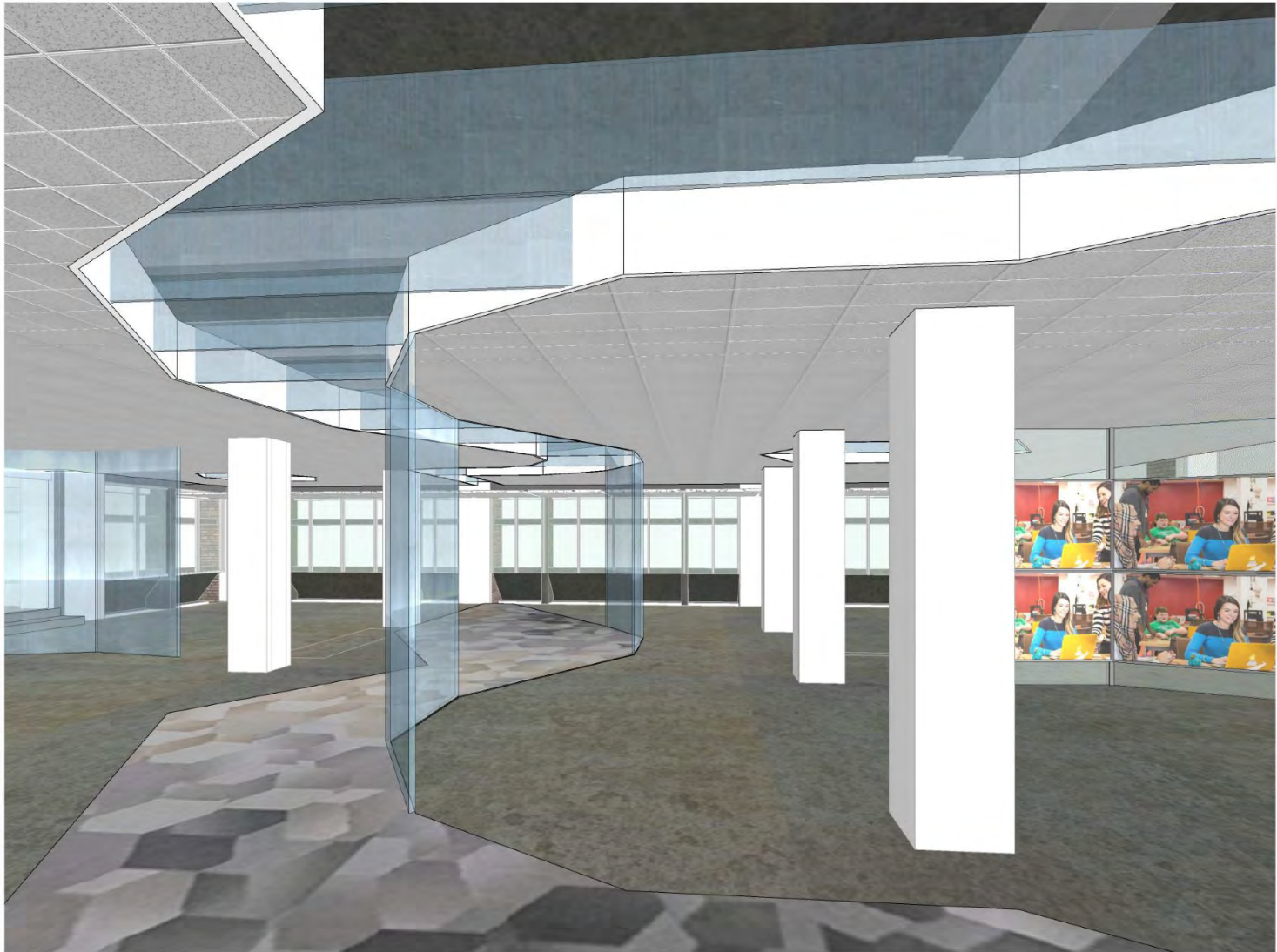


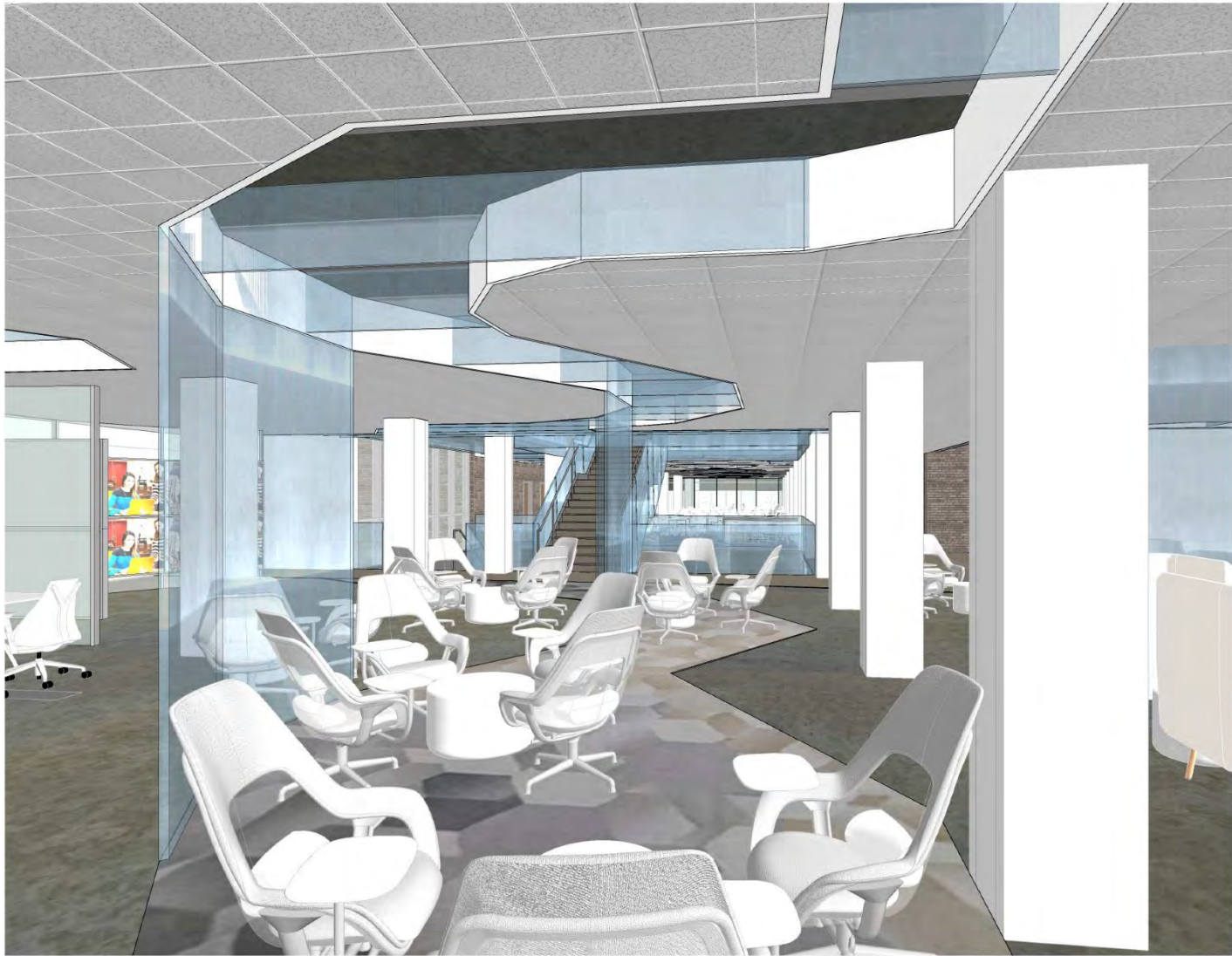


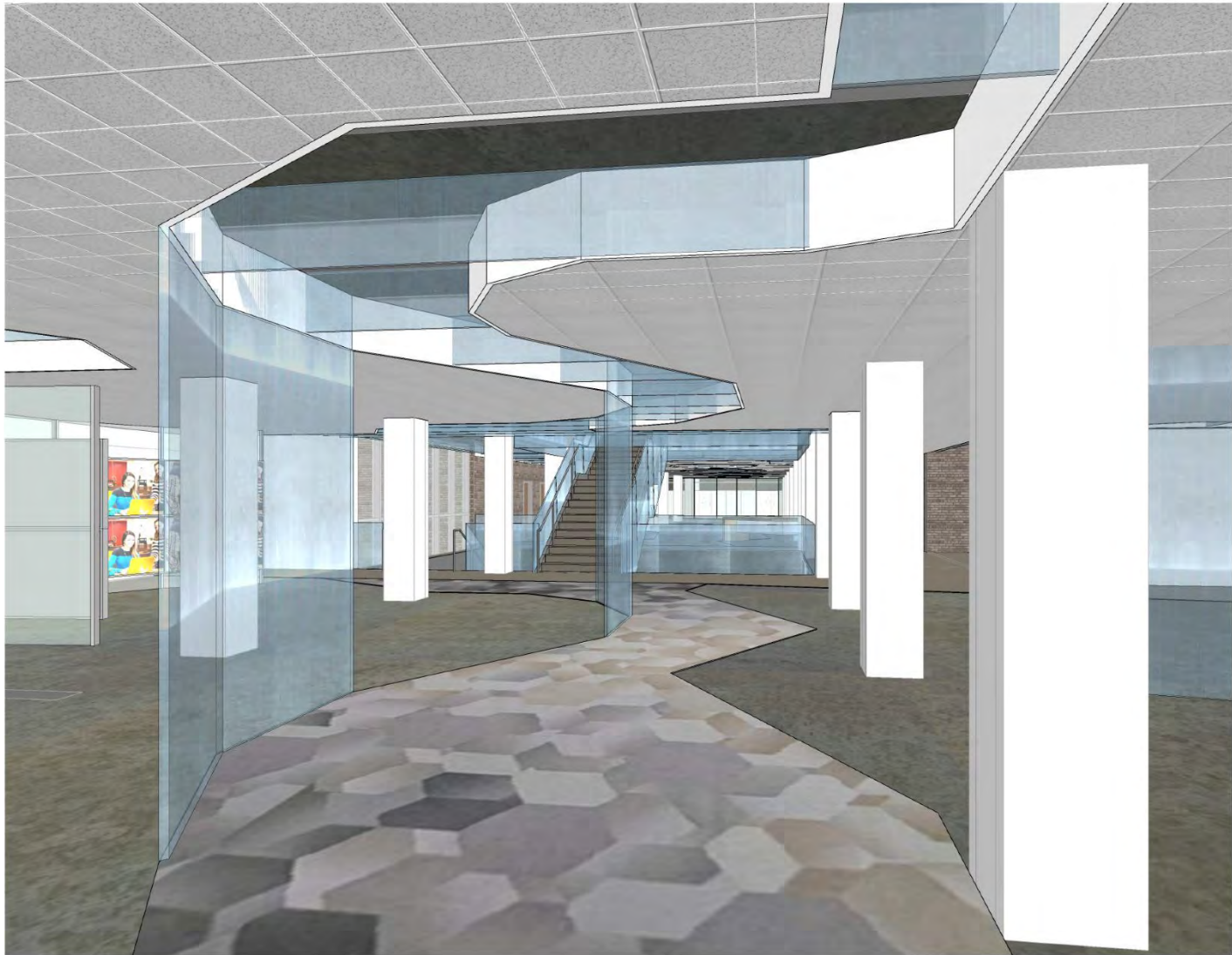




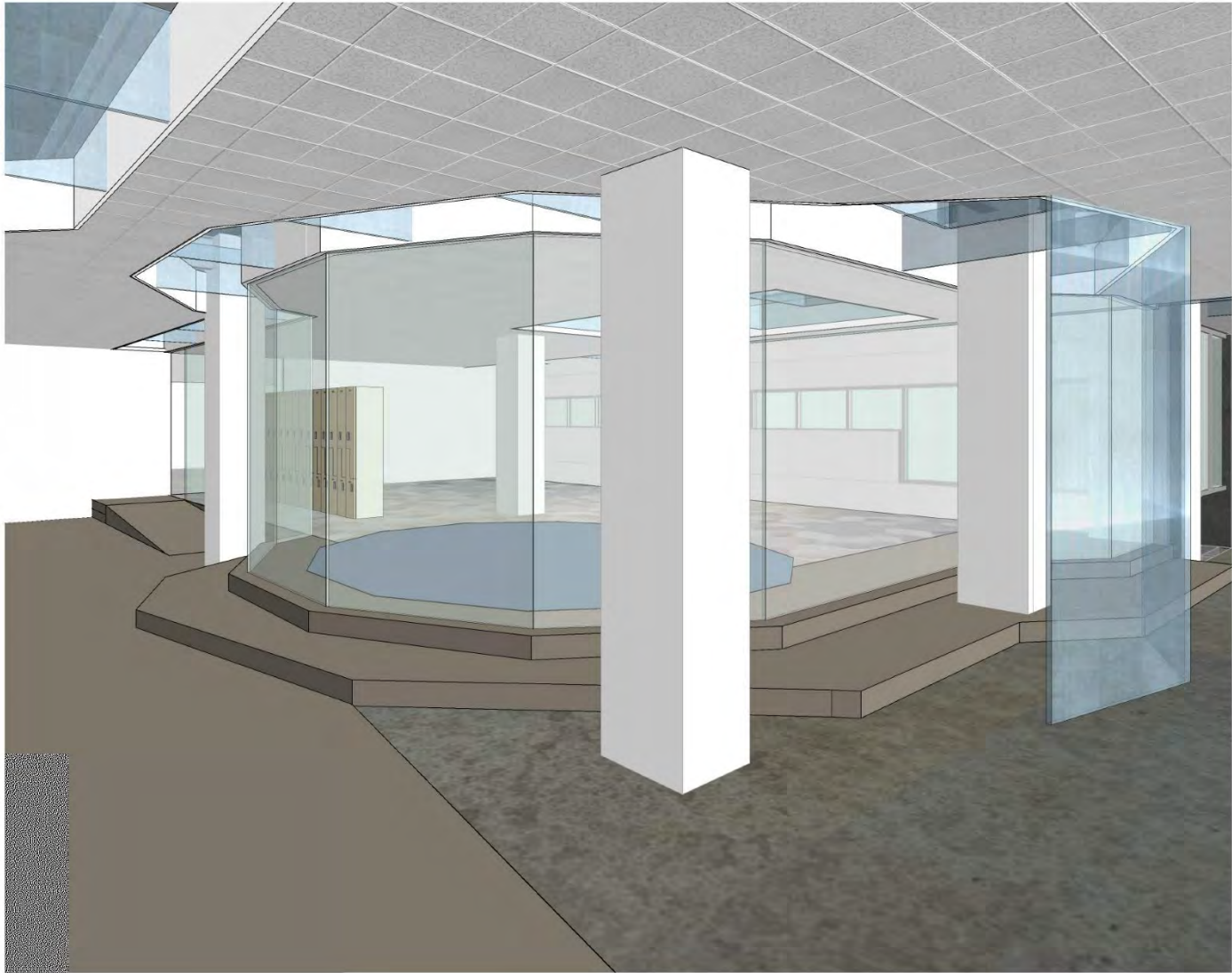


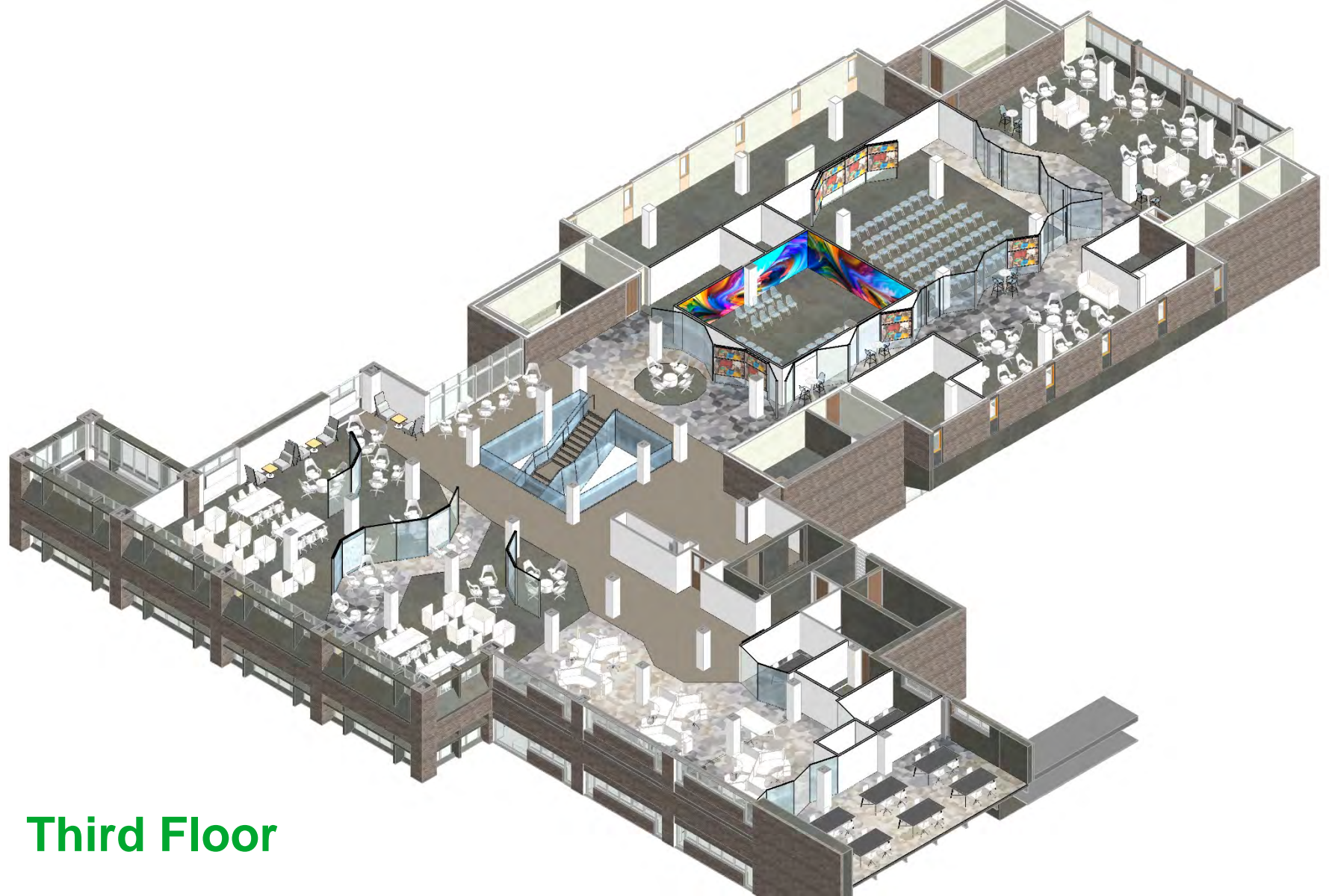




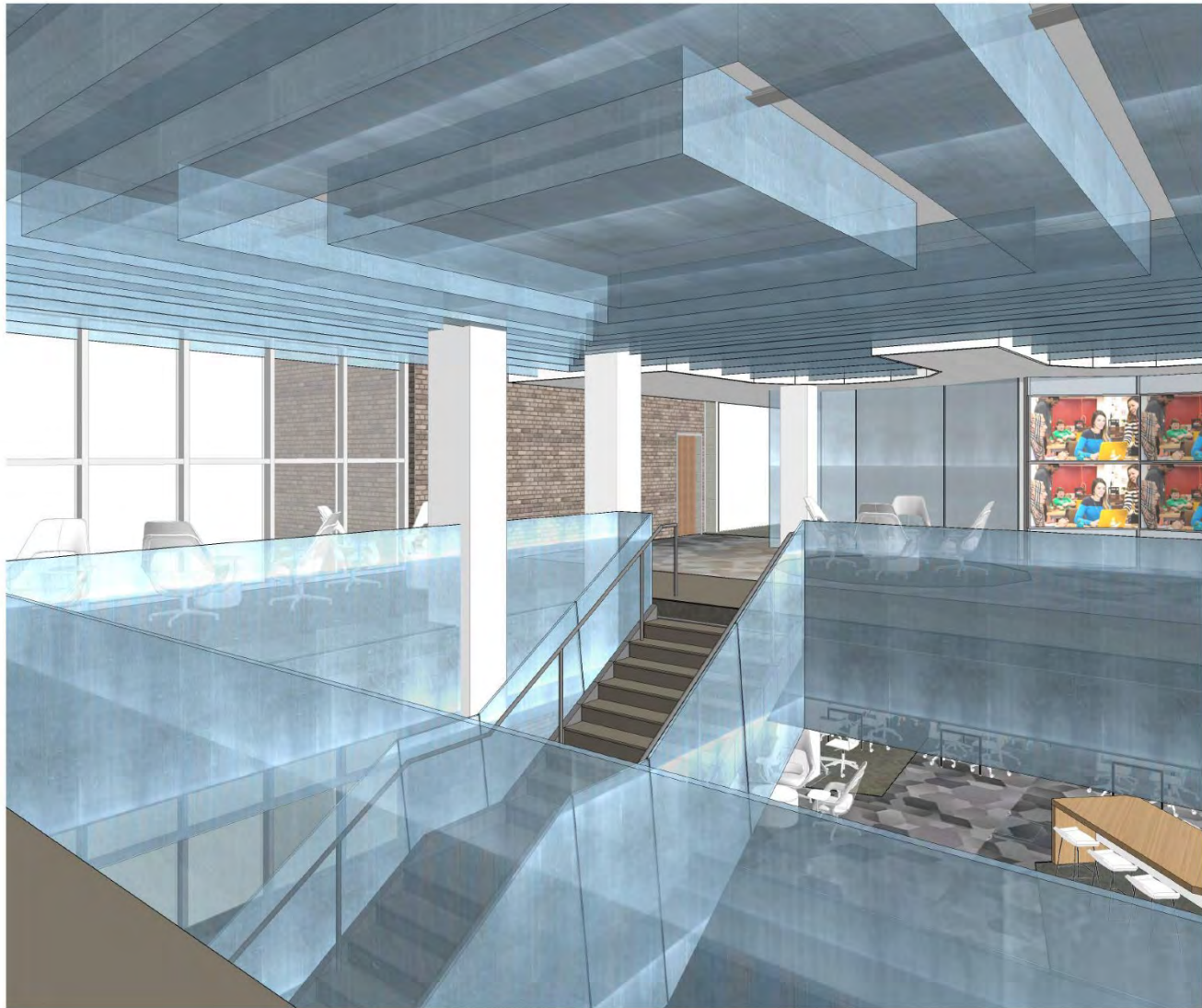








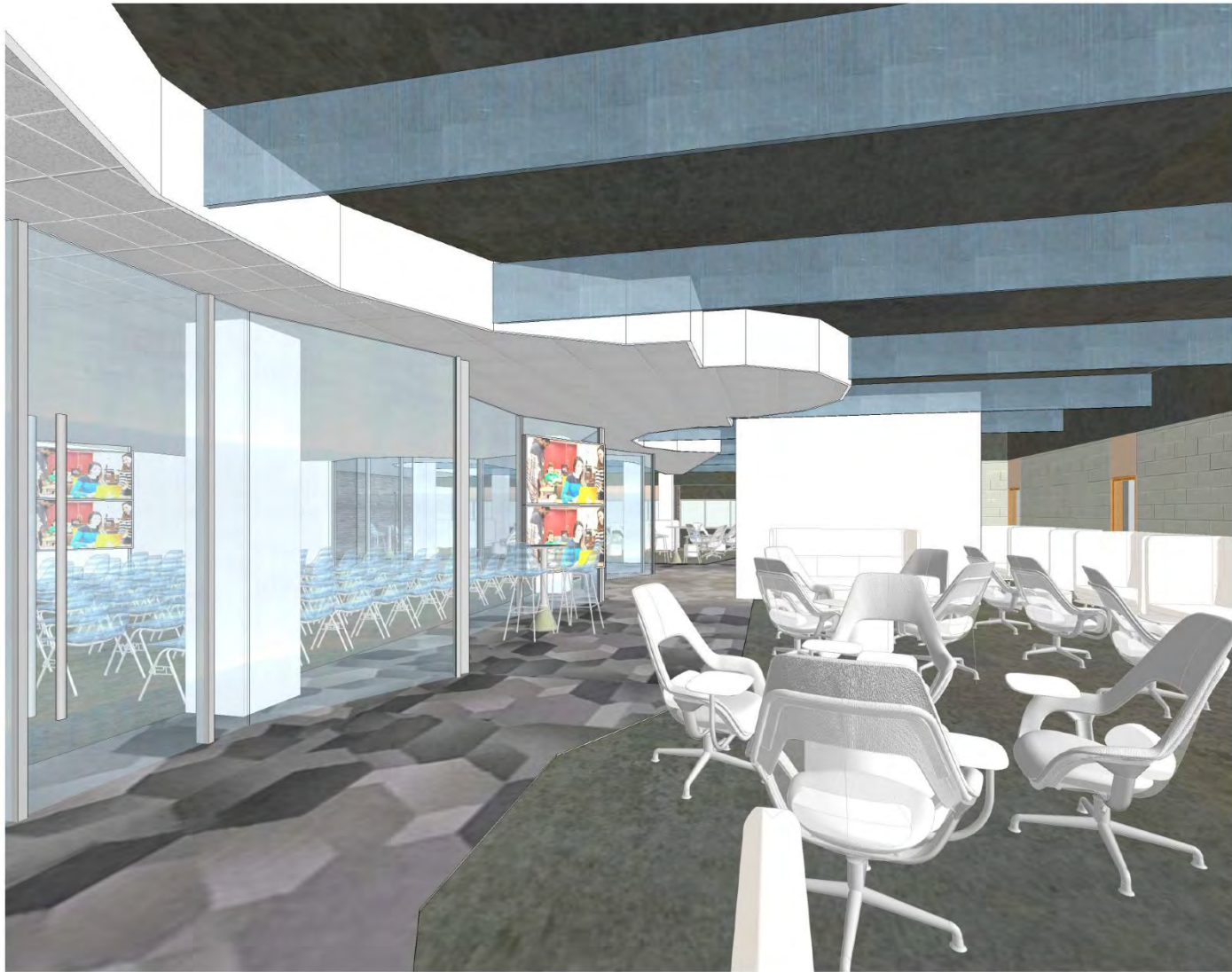
Third Floor

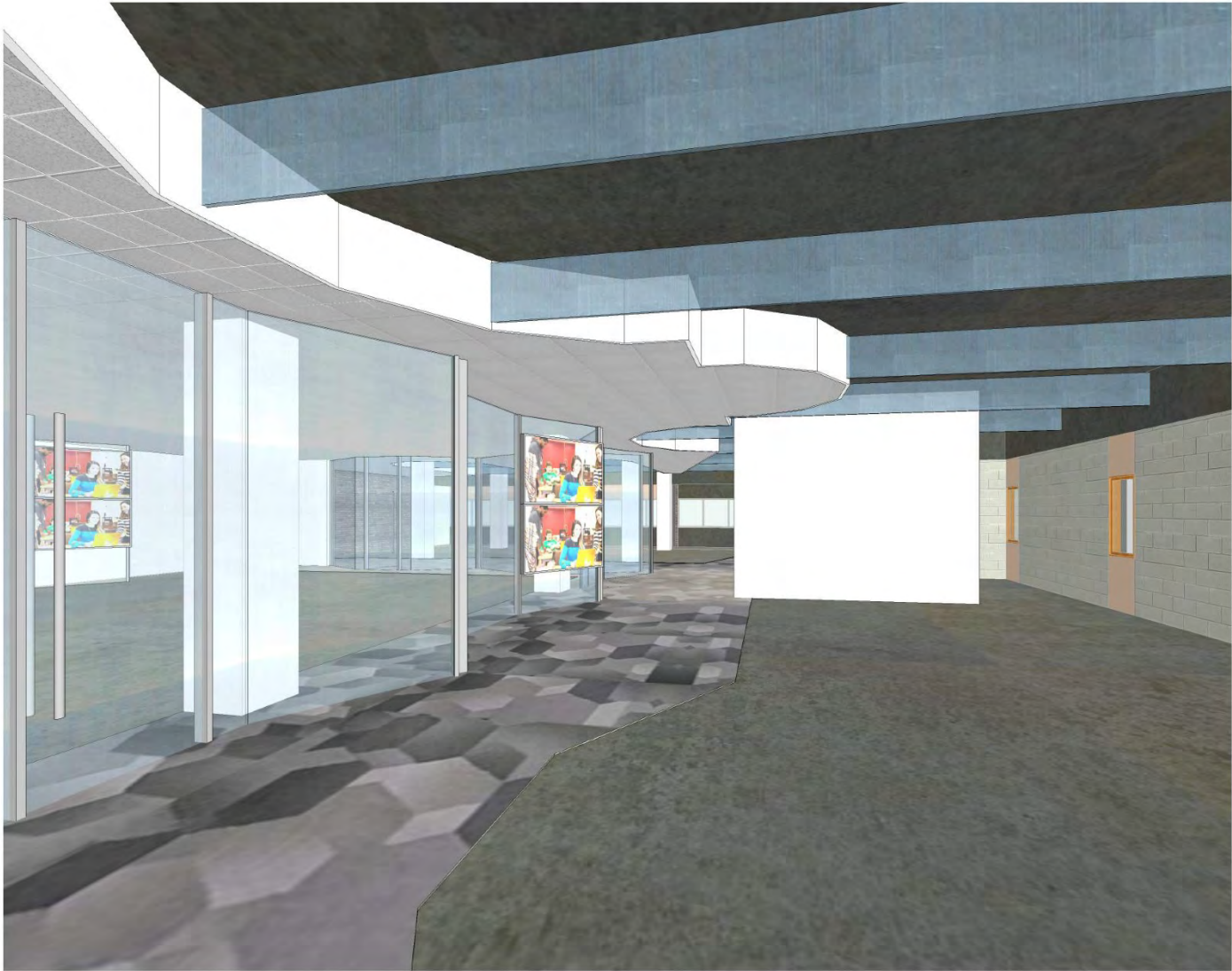








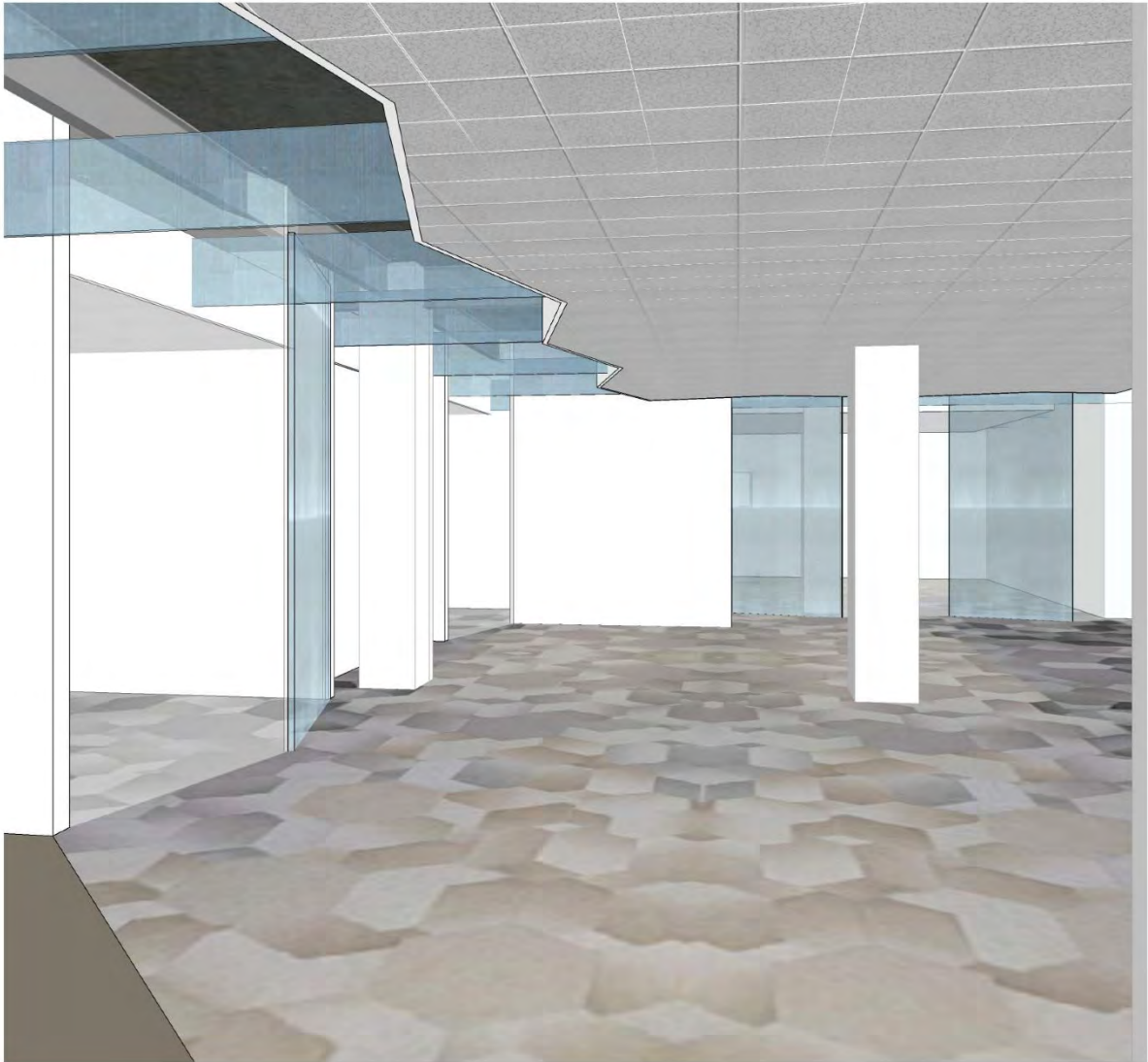


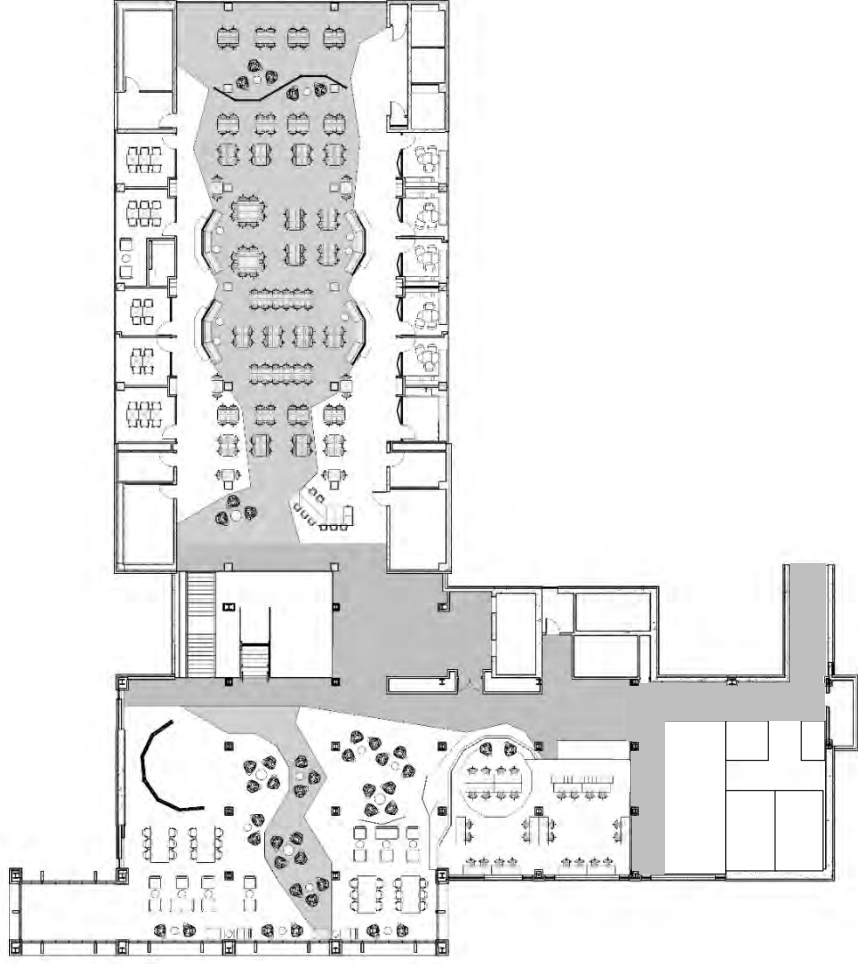
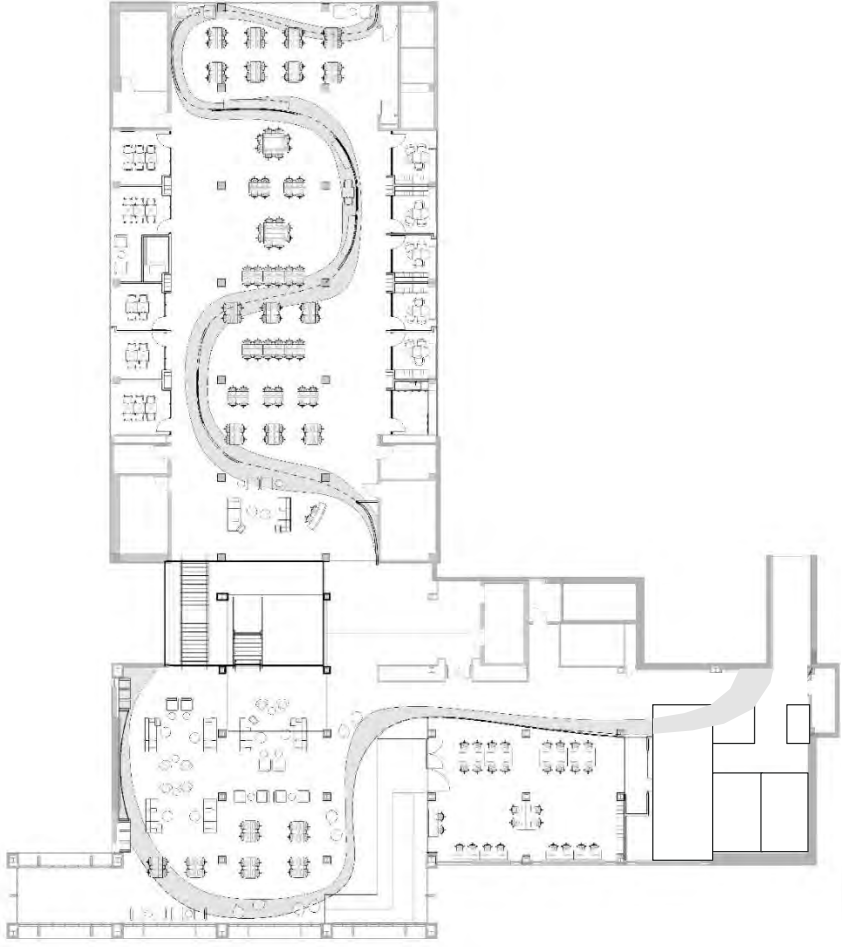


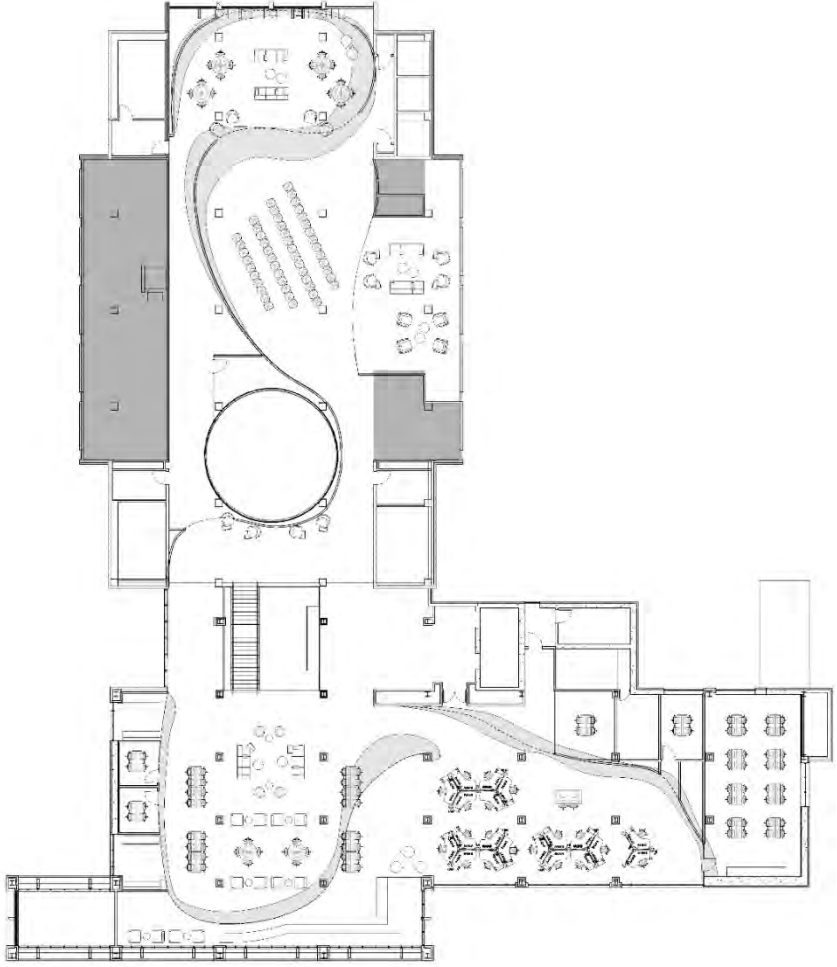


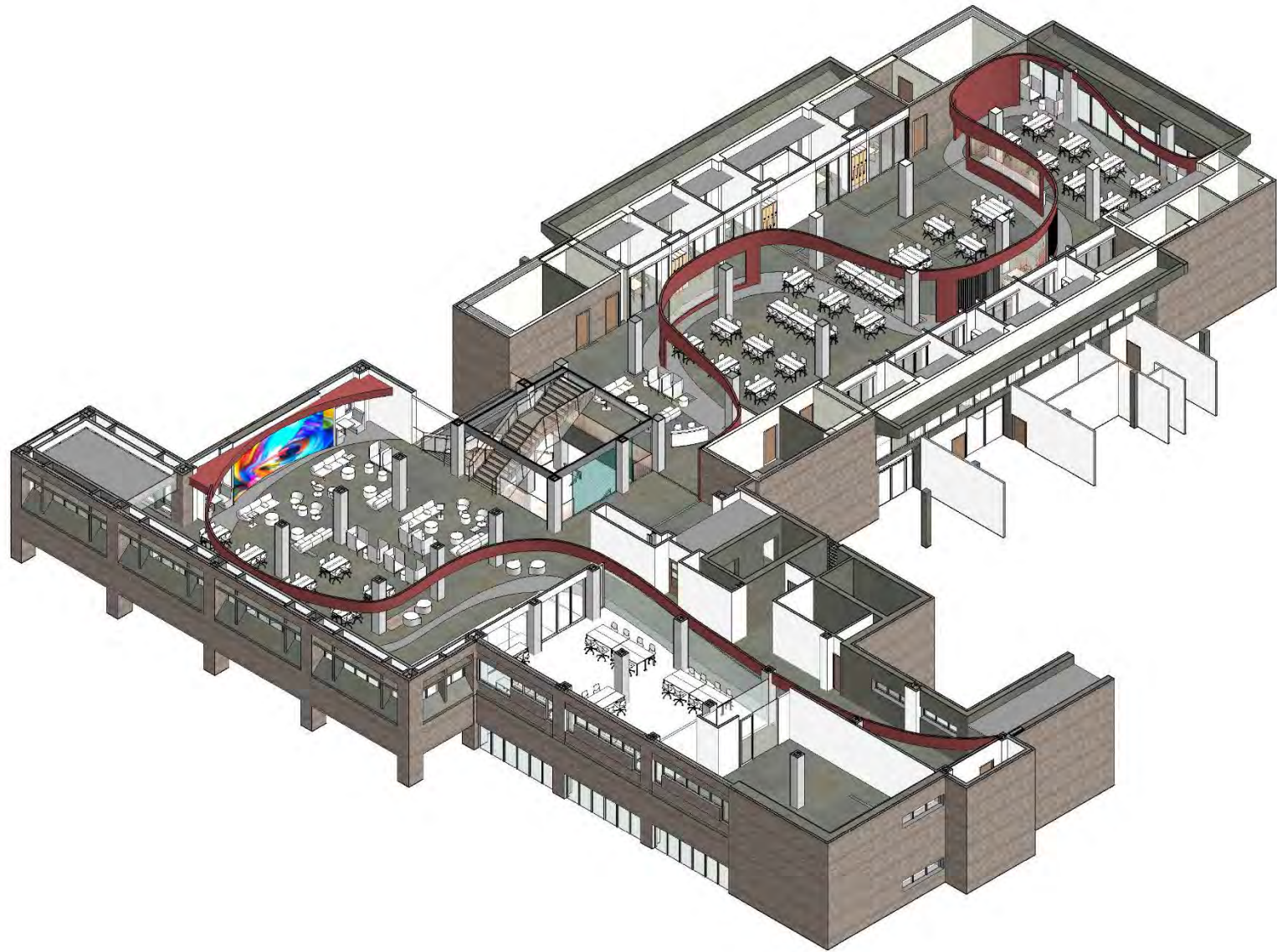


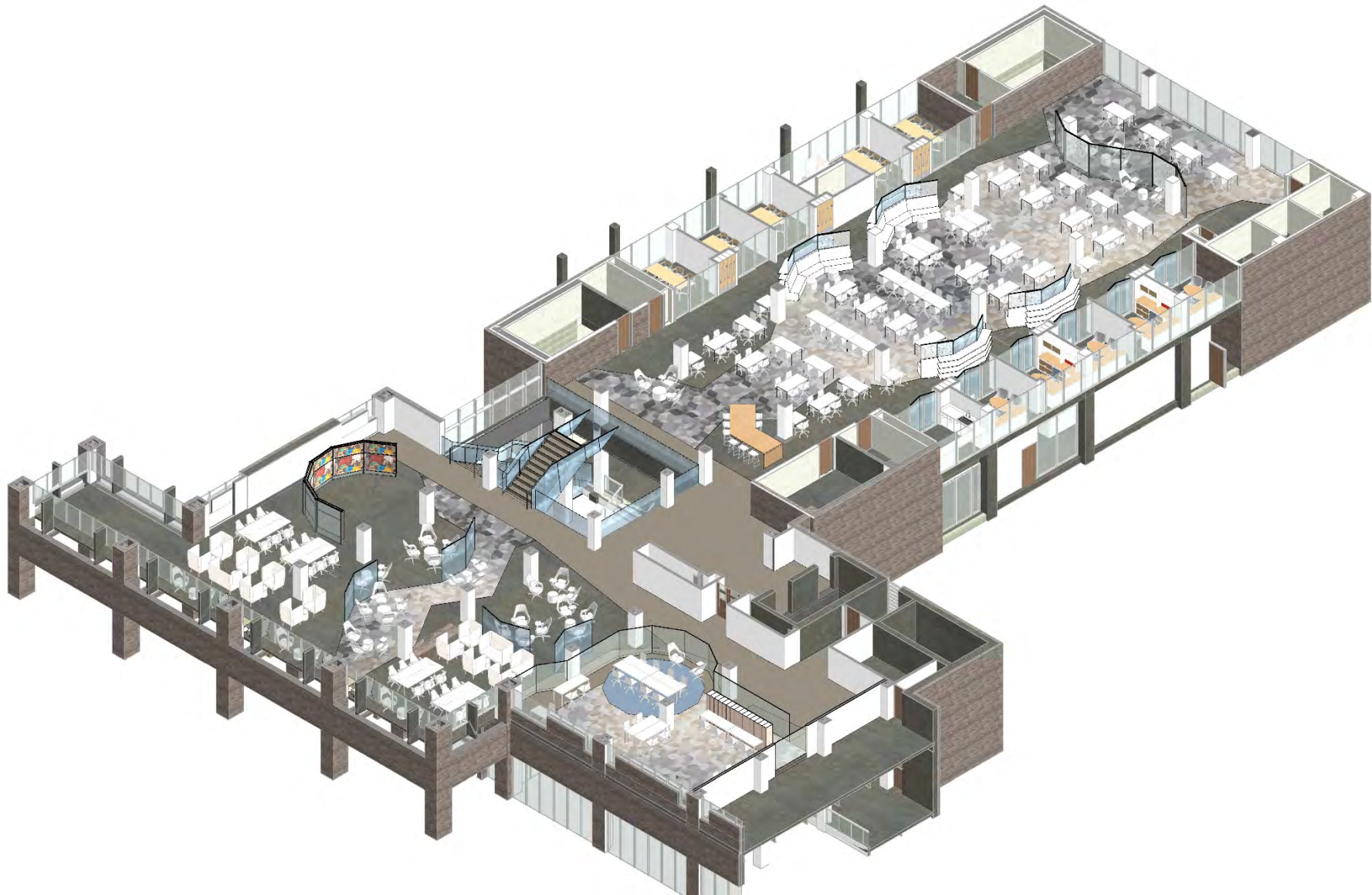


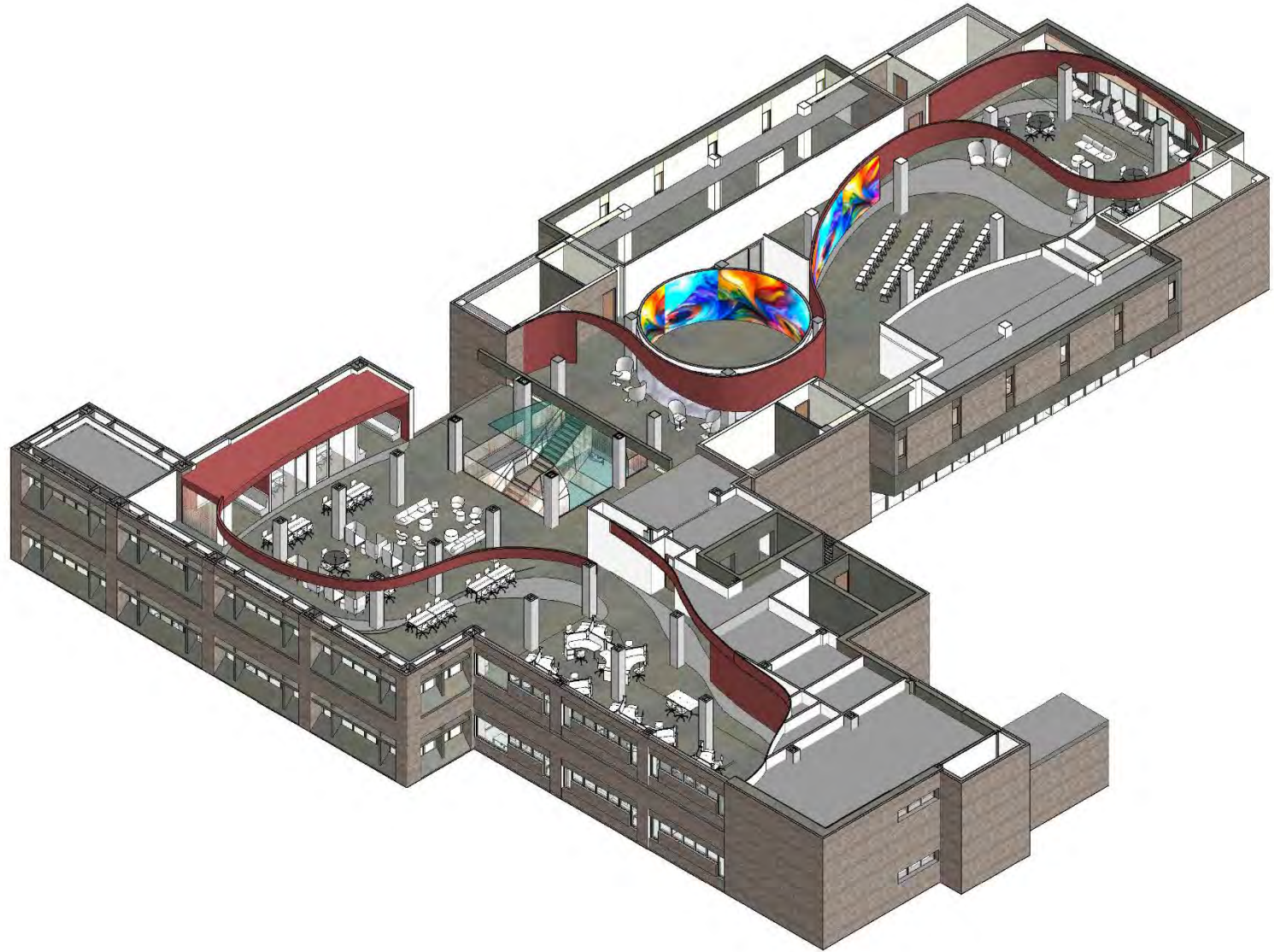


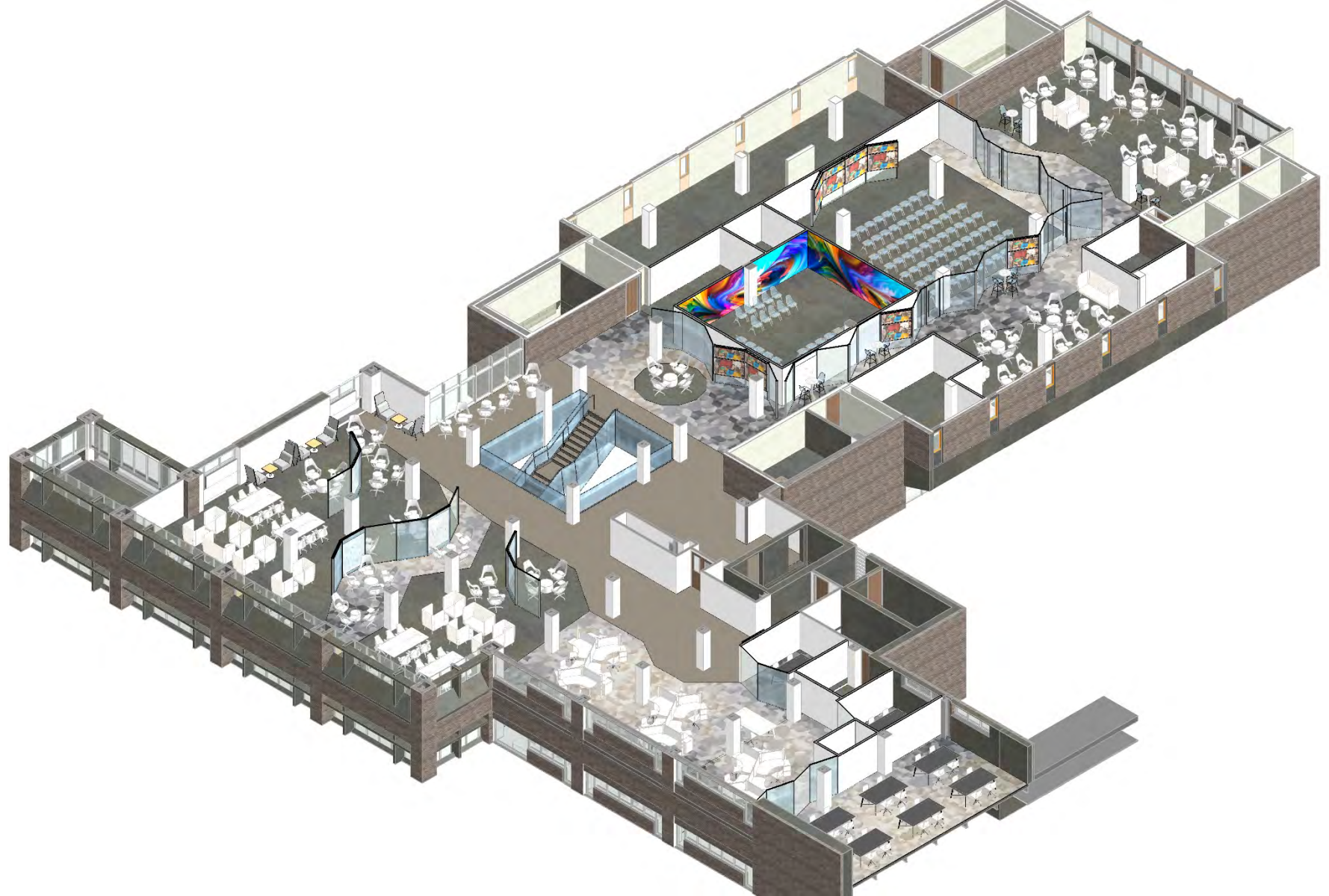










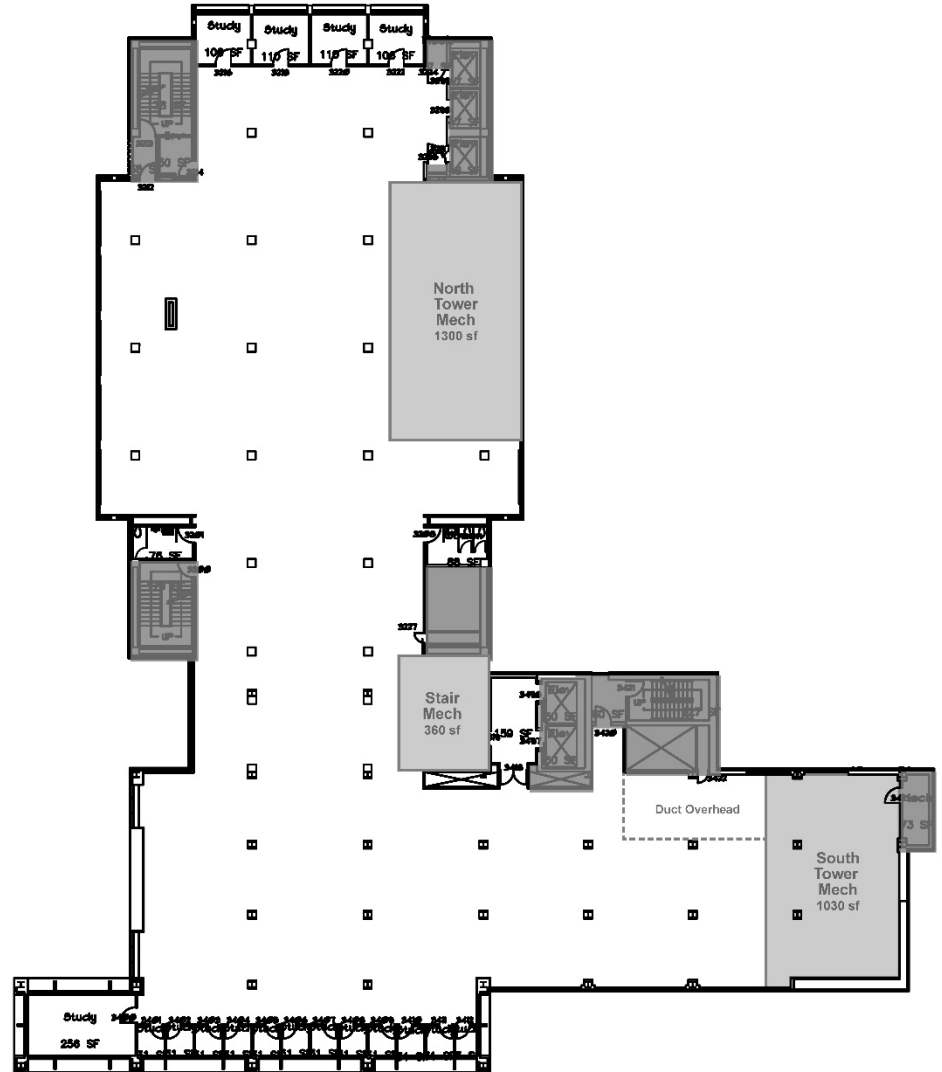




Mechanical System Development



Fourth Floor: Option A

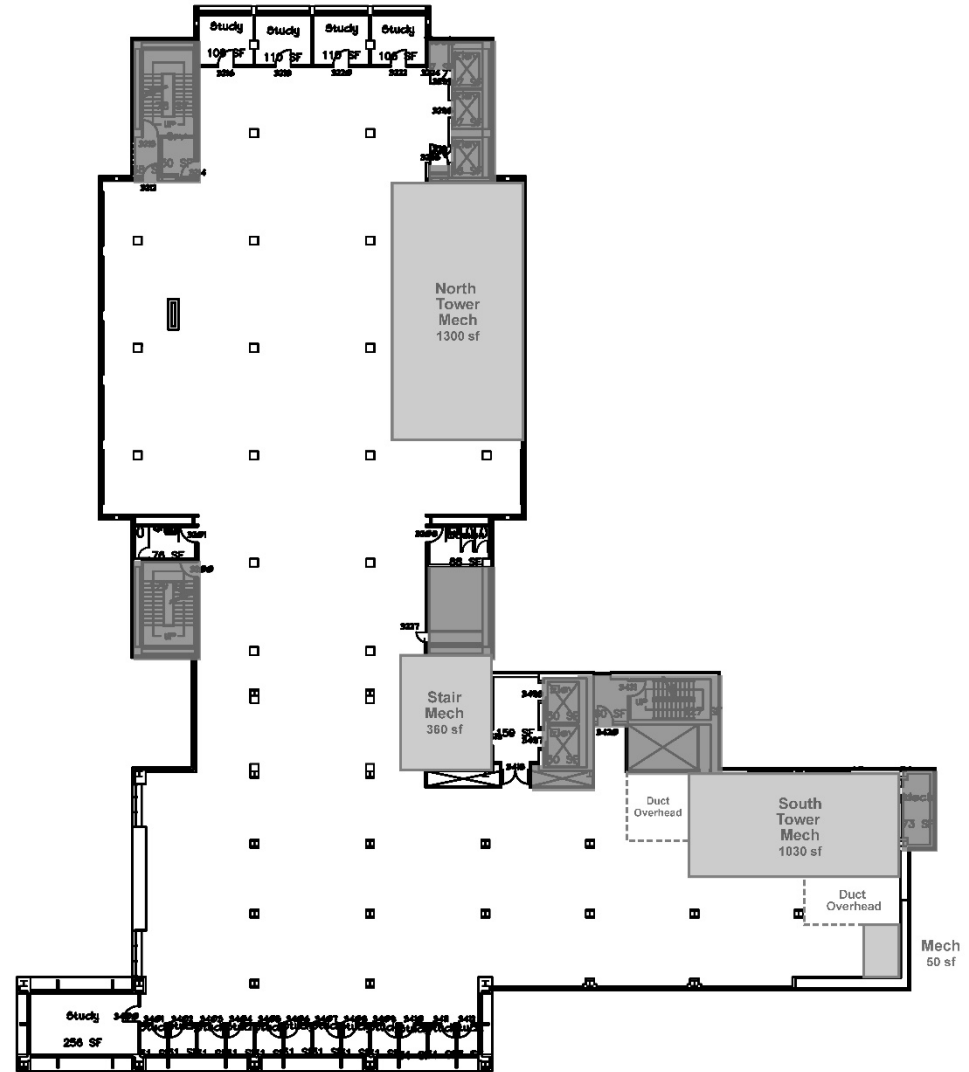




Fourth Floor: Option B*

Issues with this option:

- AHU accessibility against wall
- AHU more difficult to install against wall
- Access through AHU
- Relief louver velocity/noise
- Crane logistics for installation





Thoughts & next steps